



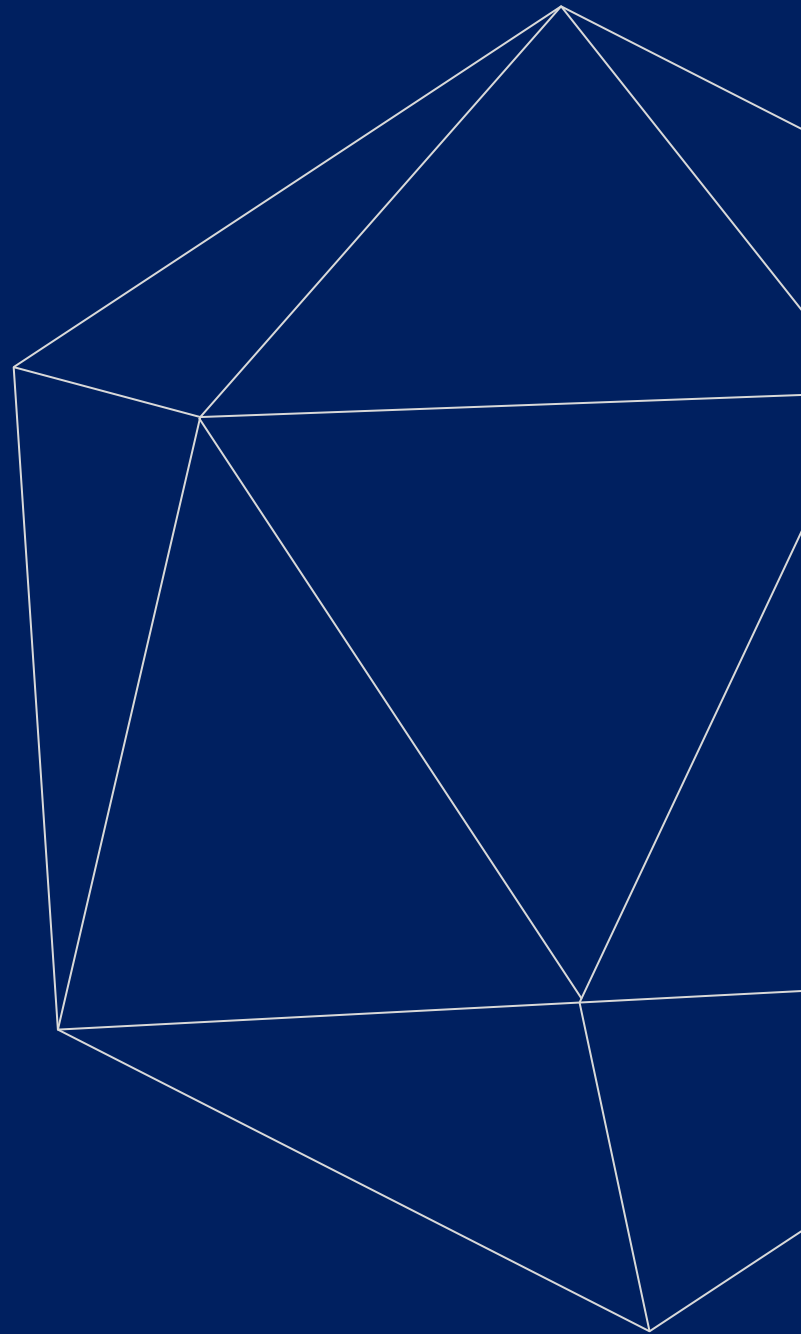
# MEDICAL LINES

## COLOR DOPPLER



**Kalstein**®

A different accompaniment, at your service





# Kalstein®

A different accompaniment, at your service

OUR SERVICES

## Benefits and Support

In Kalstein France, we take care of the full satisfaction of our customers, that is why we provide value-added services of the highest level based on our experience.



### Online Inductions and Trainings

In any part of the world, receive your induction or training from our specialized team of engineers



### Quick Response

Our work team is always available to response all your consults or questions, in order to support you in any situation.



### #Letsgivemore ♥

Thanks to your purchase, a donation will be made to a non-profit foundation that fights against breast cancer and helps most vulnerable communities.



### Technical Support

Enjoy of personalized advice for the correct preventive and corrective maintenance of your equipment, thanks to Kalstein's manuals and articles, special catalogues and video tutorials.



### Delivery Logistics

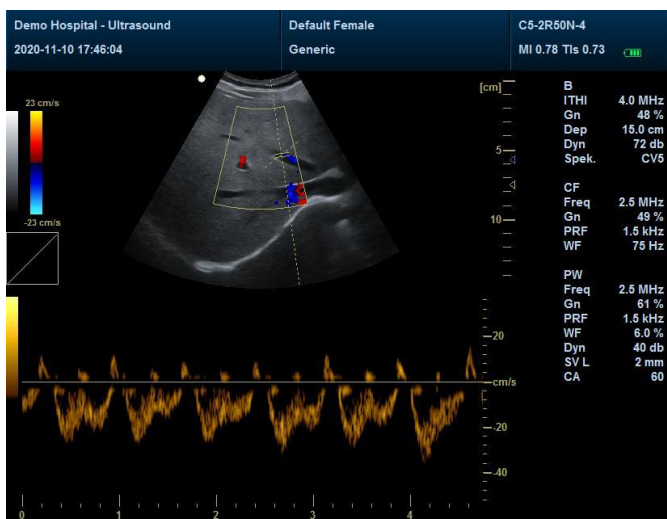
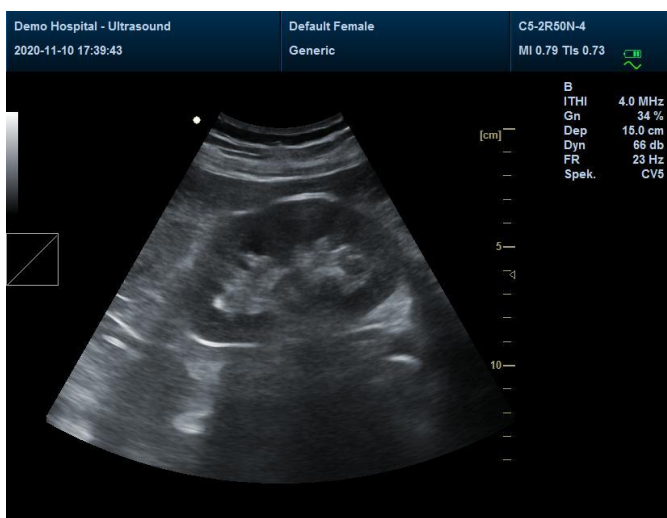
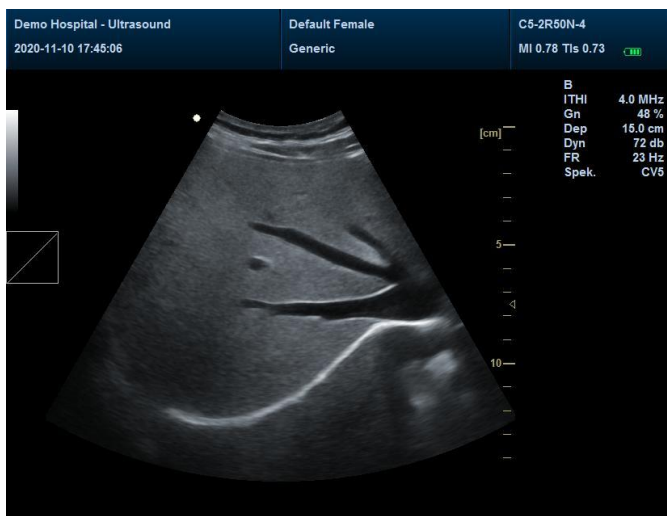
We take care of all the necessary logistics for the dispatch of your goods, whether is by sea, land or air.



### Kalstein Worldwide

With more than 25 years growing with our customers, Kalstein's multiformat and modern content, is now present in more than 10 countries and increasing.





## 4D Color Doppler

### Model YR906B



#### Short Description:

1. Large 15 inch LED color display real Doppler function USB ports and VGA port and 2 probe connectors.
2. Built-in battery, which can be contentiously worked at least 3 hours when power off.
3. Main Application: Abdomen / Cardiac / Obstetrics / Gynecology / Urology / Andrology / Small Parts / Vascular / Pediatrics / Musculoskeletal and so on
4. IMAGING MODES: B, 2B, 4B, M, B/M, B/C, B/D, B/C/D, B/CFM/D, CF+B model simultaneously Color, Dual Color, Simultaneous 2D/3D/4D Color Compound, PW, CW Duplex/Triplex, CFM, CDE, PD, Directional PD, CD . Anatomy M, Color M mode
5. PC-based Color Doppler with Windows system, which can connect with any printers in any brands. Printed area are adjustable, which can be pictures, reports or picture report, etc.
6. Built-in DICOM 3.0 protocol
7. Multi-languages function: English, Chinese, Spanish, and Portuguese, Russian, Arabic, French, Vietnamese, Indonesian, German, Persian, Thai and so on.



#### #Letsgivemore

Thanks to your purchase, a donation will be made to a non-profit foundation that fights against breast cancer and helps most vulnerable communities.



All rights reserved © KALSTEIN France S. A. S.,  
Optimum Business Center 450 Rue Baden Powell,  
• 34000 Montpellier, France.  
Tit: +33 467158849 / +33 680760710/ +33 663810023  
<https://kalstein.eu>  
KALSTEIN FRANCE, S.A. S



## 4D Color Doppler

**Model YR906B**

### DICOM Connectivity

DICOM3.0 Compliant

### Image Storage

Storage Format: PNG, AVI, BMP, JPEG, DICOM Export Video

Format: AVI

Export Image Format: PNG, JPEG, BMP, DICOM USB Flash Drive



### Technology

Panoramic Imaging Tech
All-digital signal processing Tech

### Electrical Power

Voltage	100 V~240 V
Power	DC12.8V 3A
Frequency	50/60 Hz

### Physical Specifications

Equipment size	365mm×300mm×75mm
Equipment weight	5.5kg
Packing size	490mm×270mm×490mm
Packing weight	10kg

### Connectivity/Media/Peripherals

Transducer Ports	2
USB Ports	2
Hard Disc	64GB (SSD), 120G/200GB SSD (Optional)
Ethernet Port	2(100Mb/1000Mb)
External Display	VGA,HDMI,
Printer(Optional)	Video Printer, Laser Printer, Thermal Printer
Printing Area	Image, report, Image+report

### Cine/Image Memory

Cine Memory	1200 frame (max)
Cine Review Speed	1, 2, 4, 8
Cine Review Loop	YES
Cine Capture Function	YES



### #Letsgivemore

Thanks to your purchase, a donation will be made to a non-profit foundation that fights against breast cancer and helps most vulnerable communities.



All rights reserved © KALSTEIN France S. A. S.,  
Optimum Business Center 450 Rue Baden Powell,  
• 34000 Montpellier, France.  
Tél: +33 467158849 / +33 680760710/ +33 663810023  
<https://kalstein.eu>  
**KALSTEIN FRANCE, S.A. S**





Multi-beam formation Tech
Speckle Reduction Tech
Tissue Harmonic Imaging Tech
Dynamic Tissue Optimization Tech
Duplex & Triplex Synchronous Display
Directional Power Doppler
Imaging Parameters Preset
Tissue Special Image
PW Auto Trace
Update in line
CF+B mode in one screen
Complex Model Imaging
IMT auto measurements
Virtual convex array
Trapezoidal imaging



### General Performance

Digital Broadband	12288 channels
Beam-former	Re-programmable
Transmit Voltage	Adjustable (15 steps)
Beam-former Frequency Range	1~40 MHz

### Pan/Zoom

Real-Time Image Zoom, Zoom Range: 100%~400%, Up/Down/Left/Right Inversion

### HARDWARE SPECIFICATION

#### LED Monitor

Size (Diagonal)	15"
Contrast Ratio	800:1
Resolution	1024×768 pixels
Brightness	230 cd/m2
Color Depth	24bit
Rotate Angle	± 90°
Grey Levels	256
Software	4D software, PW/CW software

### Embedded Speakers

Impedance: 4Ω



#### #Letsgivemore ♥

Thanks to your purchase, a donation will be made to a non-profit foundation that fights against breast cancer and helps most vulnerable communities.



All rights reserved © KALSTEIN France S. A. S.,  
Optimum Business Center 450 Rue Baden Powell,  
• 34000 Montpellier, France.  
Tit: +33 467158849 / +33 680760710/ +33 663810023  
<https://kalstein.eu>  
KALSTEIN FRANCE, S.A. S



## UPS (Optional) Imaging

### Performance

Startup Time (Max)	Avg. < 90 seconds
Preset Switching Time	Avg. < 1 second
Storage Time (Image to Disk)	Avg. < 0.5 second

### Transducers

Probe	Convex Probe	Linear Probe	Intra-Cavity Probe	Micro-convex probe	4D volume probe	Phased array probe
Frequency	Central 3.5 MHz (2.0/3.0/3.5/4.0/5.5MHz)	Central 7.5 MHz (6.0/6.5/7.5, 10.0/12.0 MHz)	Central 6.5 MHz (5.0/6.0/6.5 / 7.5 /9.0MHz)	Central 4.0 MHz (2.0/3.0, 3.5/4.0/5.0/6.0/6.5 /7.5/9.0MHz ) <b>pediatric use</b> (2.0/3.0, 3.5/4.0/5.5, 6.5/7.5/10.0 MHz)	Central 3.5 MHz (2.0, 3.0, 3.5, 4.0, 5.5, 6.5MHz)	(2.0/3.0, 3.5/4.0/5.0/6.0/6.5 /7.5/9.0/10.0MHz )
Pitch	0.516mm	0.352mm	0.216 mm			
Radius	60mm	N/A	10 mm			
Elements	128	128	128	128	128	128

### User Interface

User Permission setting
Intuitive Windows-based operating principles



### #Let'sgivemore

Thanks to your purchase, a donation will be made to a non-profit foundation that fights against breast cancer and helps most vulnerable communities.



All rights reserved © KALSTEIN France S. A. S.,  
Optimum Business Center 450 Rue Baden Powell,  
• 34000 Montpellier, France.  
Tit: +33 467158849 / +33 680760710/ +33 663810023  
<https://kalstein.eu>  
**KALSTEIN FRANCE, S.A. S**



User-Centric control panel with Home Base layout and control customization
On/Off task light and back-lit illumination of control panel
Variable brightness indicates active state of function keys
Easily accessible, full size QWERTY keyboard for text entry, function keys and system programming
Cine Playback, Multiple Arrows, Configurable Worksheets, Exam Review, Pictograms (Body Marks), System Setup Menu
On line attention function, tell the user how to operate in the next step

## IMAGING MODES

B, 2B, 4B, M, B/M, B/C, B/D, B/C/D, B/CFM/D, PDI Color, DPDI Color, Dual Color, Simultaneous 2D/Color Compound, PW, CW, Duplex/Triplex, CFM, CDE, PD, Directional PD, CD, **B+CF**

### B-Mode

Maps	17
Focus Count	Max. 4
Gain	0~255
TGC	8 Sliders
Dynamic Range	0~150dB
Depth	Max. 30cm
Acoustic Power	0 ~ 15
Chroma	0~7
Grayscale Levels	256
Frame Rate	Max.1028Hz
Persistence/ Frame Average	Up to 7
Image Optimization	0~6
Top/Bottom/Left/Right Reverse	Yes
Speckle Reduction	Yes
Second Harmonics	Yes

### M-Mode

Maps	16
Chroma	16
Sweep Speed	3
Gain	0~255
Distance	Point-to-Point
Max Steer Angle	15°



**#Let'sgive more**

Thanks to your purchase, a donation will be made to a non-profit foundation that fights against breast cancer and helps most vulnerable communities.



All rights reserved © KALSTEIN France S. A. S.,  
Optimum Business Center 450 Rue Baden Powell,  
• 34000 Montpellier, France.  
Tit: +33 467158849 / +33 680760710/ +33 663810023  
<https://kalstein.eu>  
**KALSTEIN FRANCE, S.A. S**



Diameter Reduction	Point-to-Point Heart Rate/Time/Distance/Slope Side-by-Side/Bottom
--------------------	---

### Color Mode

Gain	0~255
Color Maps	0~6
Doppler Steer Angles	7 Steps
Wall Filter	0~3
Spatial Filtering	0~3
Acoustical Power	0 ~ 15
Doppler Multi-Frequency	2MHz~10MHz
Line Density Max	256 Lines
Persistence/Frame Average	0~7
Bloodstream Gain	0~127
Packet Size	8~15 Baseline/Invert/Color ROI/M-Mode

### PW Mode

Gain	0~255
D Linear Velocity	0~2
Doppler Steer Angles	7 Steps
Edge Enhancement	0~7
Wall Filtering	0~3
Audio	0~255
Correction Angle	80°/-80°
Doppler Multi-Frequency	2MHz~10MHz
Pulse Repetition Frequency	2khz~6khz
Chroma	0~7
Baseline Adjustment	0~6
Three Synchronizations	Yes
Spectrum Inversion	Yes

## MEASUREMENTS SPECIFICATIONS

### Analysis Packages

Basic, Obstetrics, Gynecology, Urology, Andrology, Cardiac, Peripheral Vascular Venous, Small Parts, Orthopedic

### Basic Measurement

B-mode basic measurement	Distance, Angle, Perimeter and Area (ellipse or
--------------------------	---



### #Let'sgivemore

Thanks to your purchase, a donation will be made to a non-profit foundation that fights against breast cancer and helps most vulnerable communities.



All rights reserved © KALSTEIN France S. A. S.,  
Optimum Business Center 450 Rue Baden Powell,  
• 34000 Montpellier, France.  
Tél: +33 467158849 / +33 680760710/ +33 663810023  
<https://kalstein.eu>  
KALSTEIN FRANCE, S.A. S





	track-based method), Volume, Histogram, Sectional Map
M-mode basic measurement	Heart Rate, Time, Distance, Speed

### Obstetrics

Applicable to multiple birth measurements.

All general measurements and calculations

Obstetrical data versions to calculate gestational age:

— Two fixed data revisions: Asia & Europe

— One editable data version: User Custom

— Each version can estimate the gestational age and expected date of confinement based on measured gestational sac (GS), biparietal diameter (BPD), crown-rump length (CRL), femur length (FL), humeral length (HL), abdominal transverse diameter (ATD), vertebral length (LV), occipitofrontal diameter (OFD), abdominal circumference (AC) and head circumference (HC)

Obstetrical Report

Amniotic Fluid Index (AFI)

BPD/OFD, FL/AC, FL/BPD and HC/AC ratio

Estimate Weight Of Fetus

Gestational Age

Expected Date Of Confinement (LMP/BBT)

Fetal Biophysical Score

Fetus Growth Curve

### Gynecology

All general measurements and calculations

Uterus, Ovary, Follicle

Gynecology Report

### Urology

All general measurements and calculations

Kidney, Bladder, Residual Urine Volume

Urology Report

### Andrology

All general measurements and calculations Prostate, Testis

Prostate Specific Antigen (PSA)

Prostate Specific Antigen Density (PSAD) Andrology report



#Letsgivemore ❤️

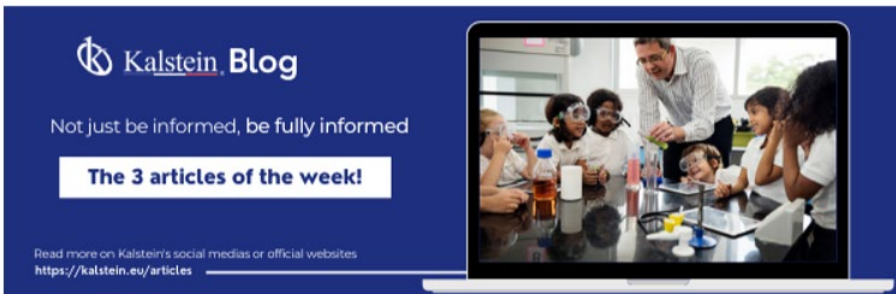
Thanks to your purchase, a donation will be made to a non-profit foundation that fights against breast cancer and helps most vulnerable communities.



All rights reserved © KALSTEIN France S. A. S.,  
Optimum Business Center 450 Rue Baden Powell,  
• 34000 Montpellier, France.  
Tél: +33 467158849 / +33 680760710/ +33 663810023  
<https://kalstein.eu>  
KALSTEIN FRANCE, S.A. S



**Articles Kalstein**  
(Social Networks and Official Websites)



**Kalstein Blog**  
Not just be informed, be fully informed  
**The 3 articles of the week!**  
Read more on Kalstein's social medias or official websites  
<https://kalstein.eu/articles>



**1**  
Read this ARTICLE NOW  
**How does the climate affect your microscope?**  
A microscope is an instrument that allows observing and measuring objects that are too small to be seen with the naked eye. This is achieved through a complex system of lenses and mirrors, which form...

**Kalstein Blog**  
**Article of the week:**  
How does the climate affect your microscope?  
Read more on Kalstein's social medias or official websites  
<https://kalstein.eu/articles>



**2**  
Read this ARTICLE NOW  
**What is the importance of the laboratory refrigerator?**  
A refrigerator in a laboratory is one of the most important equipment. It is used to maintain, in a controlled environment (refrigerated space), various fluids and substances...

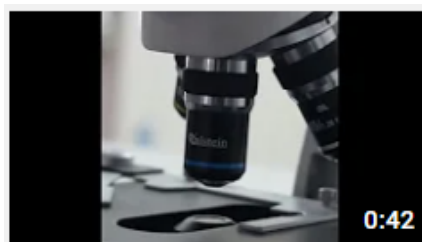
**Kalstein Blog**  
**Article of the week:**  
What is the importance of the laboratory refrigerator?  
Read more on Kalstein's social medias or official websites  
<https://kalstein.eu/articles>

**Kalstein Training Videos**  
(Youtube Channel and Official Websites)



Kalstein France - Jacinto Convit Foundation / Allianc...

23 views • 3 years ago



Kalstein's Microscopes

445 views • 1 week ago



MONTEPELLIER - FRANCE  
**SEDE**

Optimum Business Center,  
450 Rue Baden Powell,  
34000 Montpellier - France.

**Fax:** +33 (0) 4 67 15 88 49

**Tif:** +33 (0) 6 80 76 07 10

[sales@kalstein.eu](mailto:sales@kalstein.eu)

<https://kalstein.eu/>  
<https://www.kalstein.fr/>

**Official Websites for Latin America.**

