

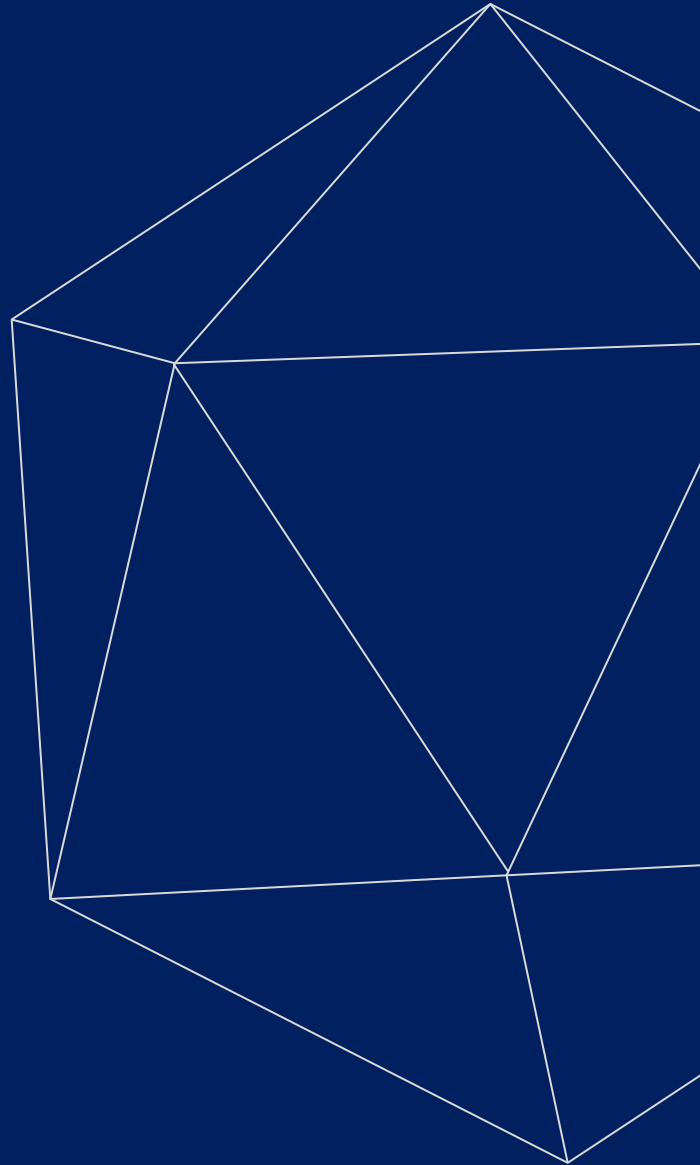


**Kalstein**<sup>®</sup>

A different accompaniment, at your service

# LABORATORY LINES

## MICROSCOPE



OUR SERVICES

**Benefits and Support**

In Kalstein France, we take care of the full satisfaction of our customers, that is why we provide value-added services of the highest level based on our experience.



**Online Inductions and Trainings**

In any part of the world, receive your induction or training from our specialized team of engineers



**Quick Response**

Our work team is always available to response all your consults or questions, in order to support you in any situation.



**#Letsgivemore** 

Thanks to your purchase, a donation will be made to a non-profit foundation that fights against breast cancer and helps most vulnerable communities.



**Technical Support**

Enjoy of personalized advice for the correct preventive and corrective maintenance of your equipment, thanks to Kalstein's manuals and articles, special catalogues and video tutorials.



**Delivery Logistics**

We take care of all the necessary logistics for the dispatch of your goods, whether is by sea, land or air.



**Kalstein Worldwide**

With more than 25 years growing with our customers, Kalstein's multifomat and modern content, is now present in more than 10 countries and increasing.



**KALSTEIN® Microscope**

**USB 3.0 CMOS DIGITAL CAMARA, HIGH FPA FLUORESCENT  
IMAGE, 1,5M-45M**

**Model YR0A59.2213**



**#Letsgivemore** ♥

Thanks to your purchase, a donation will be made to a non-profit foundation that fights against breast cancer and helps most vulnerable communities.



All rights reserved © KALSTEIN France S. A. S.,  
2 Rue Jean Lantier • 75001 Paris •  
+33 1 78 95 87 89 / +33 6 80 76 07 10 •  
<https://kalstein.eu>  
KALSTEIN FRANCE, S. A. S



YR0A59.2213

USB3.0 CMOS Digital Camera, High Fps, Fluorescent Image, 1.5M~45M

YR0A59.2213 adopt SONY Exmor CMOS sensor as the image-picking device and USB3.0 is used as the transfer interface. A59.2213 hardware resolutions range from 1.5M to 45M and come with the integrated CNC aluminum alloy compact housing.

YR0A59.2213 integrated with 12 bit Ultra-fine Hardware Image Signal Processor Video Pipeline (Ultra-fine TM HISPVP) for Demosaic, Adjustments, Automatic Exposition, Gain Adjustment, One Push White Balance, Chrominance Adjustment, Saturation Adjustment, Gamma Correction, Luminance Adjustment, Contrast Adjustment, Bayer and finally form RAW data for 8/12 bit output. This will move the heavier burden of the processing from the PC to the Ultra-fine TM HISPVP and greatly accelerating the processing speed.

YR0A59.2213 comes with advanced video & image processing software Image View. Providing Windows/Linux/macOS/Android multiple platform SDK(Native C/C++, C#/VB.NET, Python, Java, DirectShow, Twain, etc );

YR0A59.2213 can be widely used in bright field light environment and microscope image capture and analysis with higher frame rate.

#Letsgivemore 

Thanks to your purchase, a donation will be made to a non-profit foundation that fights against breast cancer and helps most vulnerable communities.



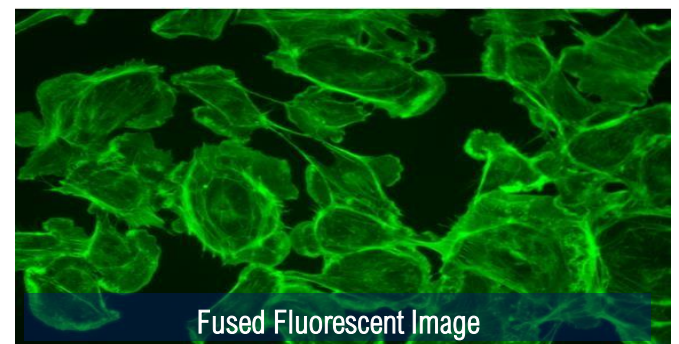
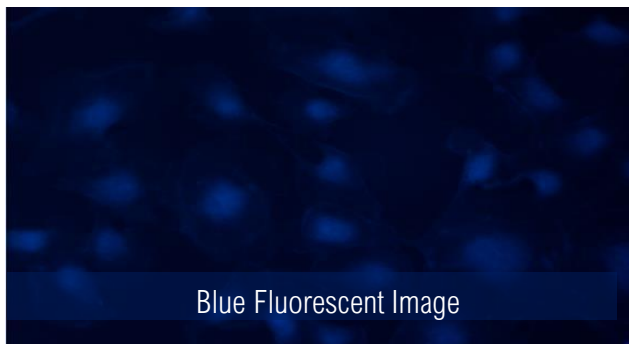
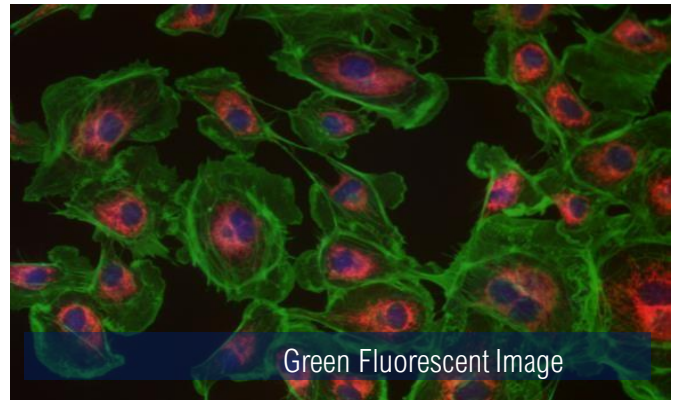
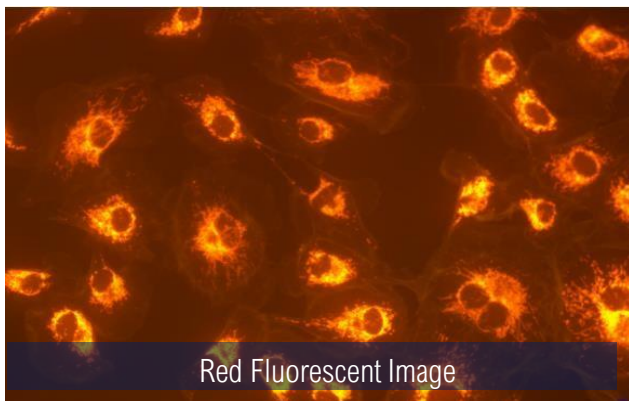
All rights reserved © KALSTEIN France S. A. S.,  
2 Rue Jean Lantier • 75001 Paris •  
+33 1 78 95 87 89 / +33 6 80 76 07 10 •  
<https://kalstein.eu>  
KALSTEIN FRANCE, S. A. S







- ✓ USB3.0 Digital Camera SONY Exmor Back-illuminated CMOS Sensors Resloution 1.5M~45M
- ✓ Super High Sensitivity Up To 2350mV(IMX385), Ultra Low Noise For Fluorescent Image
- ✓ Ultra-Fine Color Hardware Color Engine Ensuring High FPS Up To 15 Frames @ 20M
- ✓ Real-time 8/12/14/16 Bit Depth Switch, Integrated CNC Aluminum Alloy Compact Housing
- ✓ With Advanced Video & Image Processing Software Image View, Support SDK For Win/Linux/Mac/Android



**#Let'sgive more** ♥

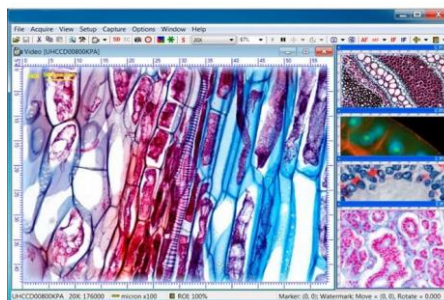
Thanks to your purchase, a donation will be made to a non-profit foundation that fights against breast cancer and helps most vulnerable communities.



All rights reserved © KALSTEIN France S. A. S.,  
 2 Rue Jean Lantier • 75001 Paris •  
 +33 1 78 95 87 89 / +33 6 80 76 07 10 •  
<https://kalstein.eu>  
**KALSTEIN FRANCE, S. A. S**



## YR0A59.2213 Specification



YR0A59.2213 USB3.0 CMOS Digital Camera, High Fps, Fluorescent Image, 1.5M~45M

| Cata. No.    | Sensor & Size(mm)                            | Pixel(μm)   | G Sensitivity<br>Dark Signal          | FPS/Resolution    | Binning        | Exposure    |           |
|--------------|----------------------------------------------|-------------|---------------------------------------|-------------------|----------------|-------------|-----------|
| 45MPA        | 45M/IMX294(C)<br>1.4" (18.93x13.00)          | 2.315x2.315 |                                       | 8.1@8176x5616     | 1x1(3:2)       | 0.1ms~15s   |           |
|              |                                              |             |                                       | 30.0@4088x2808    | 2x2(3:2)       |             |           |
|              |                                              |             |                                       | 8.1@7408x5556     | 1x1(4:3)       |             |           |
|              |                                              |             |                                       | 108mv with 1/30s  | 33.0@4088x2808 |             | 2x2(4:3)  |
|              |                                              |             |                                       | 0.03mv with 1/30s | 10.4@8176x4320 |             | 1x1(17:9) |
|              |                                              |             |                                       |                   | 34.7@4096x2160 |             | 2x2(17:9) |
|              |                                              |             |                                       |                   | 62.5@2048x1080 |             | 3x3(17:9) |
|              |                                              |             |                                       |                   | 86.5@1344x720  |             | 4x4(17:9) |
| 45MPB        | 45M/IMX492(C)<br>1.4" (18.93x13.00)          | 2.315x2.315 | 108mv with 1/30s<br>0.03mv with 1/30s | 8.1@8176x5616     | 1x1            | 0.1ms~15s   |           |
| 32MPA        | 32M/IMX294(C)<br>1.15" (12.96x12.96)         | 2.315x2.315 | 108mv with 1/30s<br>0.03mv with 1/30s | 8.1@5600x5600     | 1x1            | 0.1ms~15s   |           |
|              |                                              |             |                                       | 30.0@2800x2800    | 2x2            |             |           |
| 21MPA        | 21M/IMX269 (C)<br>4/3 "(17.4x13.0)           | 3.3 x3.3    | 399mv with 1/30s<br>0.1mv with 1/30s  | 30.0@1400x1400    | 4x4            | 0.1ms~15s   |           |
|              |                                              |             |                                       | 17@5280x3954      | 1x1            |             |           |
|              |                                              |             |                                       | 17@3952x3952      | 1x1            |             |           |
|              |                                              |             |                                       | 56@2640x1976      | 2x2            |             |           |
| 20MPA<br>Hot | 20M/IMX183(C)<br>1 "(13.06x8.76)             | 2.4 x2.4    | 462mv with 1/30s<br>0.21mv with 1/30s | 67@1760x1316      | 3x3            | 0.1ms~15s   |           |
|              |                                              |             |                                       | 192@584x438       | 9x9            |             |           |
|              |                                              |             |                                       | 15@5440x3648      | 1x1            |             |           |
| 20MPC        | 20M/IMX183(C)<br>1 "(13.06x8.76)             | 2.4 x2.4    | 462mv with 1/30s<br>0.21mv with 1/30s | 50@2736x1824      | 2x2            | 0.1ms~15s   |           |
|              |                                              |             |                                       | 60@1824x1216      | 3x3            |             |           |
|              |                                              |             |                                       | 20@5440x3648      | 1x1            |             |           |
| 18MPA        | 18M/SONY<br>Special(C) 1/2.2<br>"(5.86x4.46) | 1.2 x1.2    | 130mv with 1/30s<br>0.1mv with 1/30s  | 48@2736x1824      | 2x2            | 0.1ms~15s   |           |
|              |                                              |             |                                       | 58@1824x1216      | 3x3            |             |           |
|              |                                              |             |                                       | 17@4880x3720      | 1x1            |             |           |
| 15.6MPA      | 15.6M/SONY<br>Special(C) 1.1<br>"(13.0x13.0) | 3.3 x3.3    | 399mv with 1/30s<br>0.1mv with 1/30s  | 40@2448x1836      | 2x2            | 0.1ms~15s   |           |
|              |                                              |             |                                       | 50@1728x1296      | 3x3            |             |           |
|              |                                              |             |                                       | 17@3952x3952      | 1x1            |             |           |
| 12.3MPA      | 12.3M/IMX304(C, GS)<br>1.1"(14.13x10.35)     | 3.45x3.45   | 1146mv with 1/30s<br>0.1mv with 1/30s | 56@1976x1976      | 2x2            | 0.1ms~15s   |           |
|              |                                              |             |                                       | 67@1316x1316      | 3x3            |             |           |
|              |                                              |             |                                       | 23.4@4096x3000    | 1x1            |             |           |
|              |                                              |             |                                       | 46.3@2048x1500    | 1x1            | 0.244ms~15s |           |



#Letsgivingore ♥

Thanks to your purchase, a donation will be made to a non-profit foundation that fights against breast cancer and helps most vulnerable communities.



All rights reserved © KALSTEIN France S. A. S.,  
2 Rue Jean Lantier • 75001 Paris •  
+33 1 78 95 87 89 / +33 6 80 76 07 10 •  
https://kalstein.eu  
KALSTEIN FRANCE, S. A. S



|        |                     |            |                   |                     |     |             |
|--------|---------------------|------------|-------------------|---------------------|-----|-------------|
| 12MPA  | 12M/IMX226(C)       | 1.85x1.85  | 280mv with 1/30s  | 25@4000x3000        | 1x1 | 0.1ms~15s   |
| Hot    | 1/1.7"(7.40x5.55)   |            | 0.1mv with 1/30s  | 50@2048x1080        | 2x2 |             |
| 12MPB  | 12M/IMX577(C)       | 1.55x1.55  | 250mv with 1/30s  | 30@4056x3040        | 1x1 | 0.1ms~5s    |
|        | 1/2"(6.29x4.71)     |            | 0.25mv with 1/30s | 60@2028x1520        | 2x2 |             |
|        |                     |            |                   | 120@1014x760        | 4x4 |             |
| 9MPA   | 9.0M/IMX305(C,GS)   | 3.45x3.45  | 1146mv with 1/30s | 34@4096x2160        | 1x1 | 0.1ms~15s   |
|        | 1" (14.13x7.45)     |            | 0.15mv with 1/30s | 60@2048x1080        | 1x1 |             |
| 9MPB   | 9.0M/IMX533(C)      | 3.76x3.76  | 535mv with 1/30s  | 40@3008x3000        | 1x1 | 0.1ms~15s   |
|        | 1" (11.31x11.28)    |            | 0.04mv with 1/30s | 123@1488x1500       | 2x2 |             |
|        |                     |            |                   | 186@992x998         | 3x3 |             |
| 8.3MPA | 8.3M/IMX274(C)      | 1.62x1.62  | 236mv with 1/30s  | 32@3840x2160        | 1x1 | 0.244ms~15s |
|        | 1/2.5"(6.22x3.50)   |            | 0.1mv with 1/30s  | 65@1920x1080        | 2x2 |             |
| 8.3MPB | 8.3M/IMX334(C)      | 2.0x2.0    | 505mv with 1/30s  | 35@3840x2160        | 1x1 | 0.02ms~15s  |
|        | 1/1.8"(7.68x4.32)   |            | 0.1mv with 1/30s  | 60@1920x1080        | 2x2 |             |
| 8.3MPC | 8.3M/IMX485(C)      | 2.9x2.9    | 2188mv with 1/30s | 45@3840x2160        | 1x1 | 0.02ms~15s  |
|        | 1/1.2"(11.14x6.26)  |            | 0.15mv with 1/30s | 70@1920x1080        | 2x2 |             |
| 8.3MPD | 8.3M/IMX585(C)      | 2.9x2.9    | 5970(mV/lx/s)     | 45@3840x2160        | 1x1 | 0.02ms~15s  |
|        | 1/1.2"(11.14x6.26)  |            | 0.13mv with 1/30s | 70@1920x1080        | 2x2 |             |
| 8.3MPE | 8.3M/IMX678(C)      | 2.0x2.0    | 3541(mV/lx/s)     | 45@3840x2160        | 1x1 | 0.02ms~15s  |
|        | 1/1.8"(7.68x4.32)   |            | 0.15mv with 1/30s | 70@1920x1080        | 2x2 |             |
| 8MPA   | 8.0M/IMX294©        | 4.63 x4.63 | 419mv with 1/30s  | 30@2808x2808(14bit) | 1x1 | 0.1ms~15s   |
|        | 1.15 "(13.00x13.00) |            | 0.12mv with 1/30s | 139@1392x1392       | 2x2 |             |
|        |                     |            |                   | 139@696x696         | 4x4 |             |
| 6.3MPA | 6.3M/IMX178(C)      | 2.4x2.4    | 425mv with 1/30s  | 30@3072 x2048       | 1x1 | 0.1ms~15s   |
|        | 1/1.8" (7.37x4.92)  |            | 0.15mv with 1/30s | 38@1536x 1024       | 2x2 |             |
| 6.3MPB | 6.3M/IMX178(C)      | 2.4x2.4    | 425mv with 1/30s  | 59@3072 x2048       | 1x1 | 0.02ms~15s  |
|        | 1/1.8" (7.37x4.92)  |            | 0.15mv with 1/30s | 59@1536x 1024       | 2x2 |             |
| 5MPA   | 5.0M/IMX264(C,GS)   | 3.45x3.45  | 1146mv with 1/30s | 35@2448x2048        | 1x1 | 0.1ms~15s   |
|        | 2/3" (8.45x7.07)    |            | 0.15mv with 1/30s | 50@1224x1024        | 1x1 |             |
| 3.1MPA | 3.1M/IMX265(C,GS)   | 3.45x3.45  | 1146mv with 1/30s | 53@2048x1536        | 1x1 | 0.1ms~15s   |
|        | 1/1.8" (7.07x5.30)  |            | 0.15mv with 1/30s | 85@1024x768         | 1x1 |             |
| 3.1MPB | 3.1M/IMX123(C)      | 2.5x2.5    | 600mv with 1/30s  | 50@2048x1536        | 1x1 | 0.1ms~15s   |
|        | 1/2.8" (5.12x3.84)  |            | 0.15mv with 1/30s | 50@1920x1080        | 1x1 |             |
| 2.1MPA | 2.1M/IMX482(C)      | 5.8x5.8    | 8935mv with 1/30s | 96@1920x1080        | 1x1 | 14us~15s    |
|        | 1/1.2"(11.14x6.26)  |            | 0.6mv with 1/30s  |                     |     |             |
| 2MPA   | 2M/IMX385(C)        | 3.75x3.75  | 2350mv with 1/30s | 125@1920x1080       | 1x1 | 0.1ms~15s   |
|        | 1/2" (7.2x4.05)     |            | 0.15mv with 1/30s |                     |     |             |
| 1.5MPA | 1.5M/IMX273(C,GS)   | 3.45x3.45  | 1146mv with 1/30s | 164@1440x1080       | 1x1 | 0.1ms~15s   |
|        | 1/2.9" (4.96x3.726) |            | 0.15mv with 1/30s | 320@720x540         | 2x2 |             |

Remark: C - Color, M-Monocolor, GS-GS Shutter



#Letsgivemore

Thanks to your purchase, a donation will be made to a non-profit foundation that fights against breast cancer and helps most vulnerable communities.



All rights reserved © KALSTEIN France S. A. S.,  
2 Rue Jean Lantier • 75001 Paris •  
+33 1 78 95 87 89 / +33 6 80 76 07 10 •  
<https://kalstein.eu>  
KALSTEIN FRANCE, S. A. S.



| OTHER HARDWARE CONFIGURATION |                                                                                                                  |
|------------------------------|------------------------------------------------------------------------------------------------------------------|
| Spectral Range               | 380-650nm (with IR-filter), for Monochromatic Camera, AR Is Used                                                 |
| White Balance                | ROI White Balance/ Manual Temp-Tint Adjustment                                                                   |
| Color Rendering Tech.        | Ultra Fine Color Engine                                                                                          |
| Capture/Control SDK          | Windows/Linux/macOS/Android Multiple Platform SDK(Native C/C++, C#/VB.NET, Python, Java, DirectShow, Twain, etc) |
| Recording System             | Still Picture and Movie                                                                                          |
| Cooling System*              | Natural                                                                                                          |



**#Let'sgivemore**

Thanks to your purchase, a donation will be made to a non-profit foundation that fights against breast cancer and helps most vulnerable communities.



All rights reserved © KALSTEIN France S. A. S.,  
 2 Rue Jean Lantier • 75001 Paris •  
 +33 1 78 95 87 89 / +33 6 80 76 07 10 •  
<https://kalstein.eu>  
 KALSTEIN FRANCE, S. A. S





# YR0A59.2213 Specification

## OPERATING ENVIRONMENT

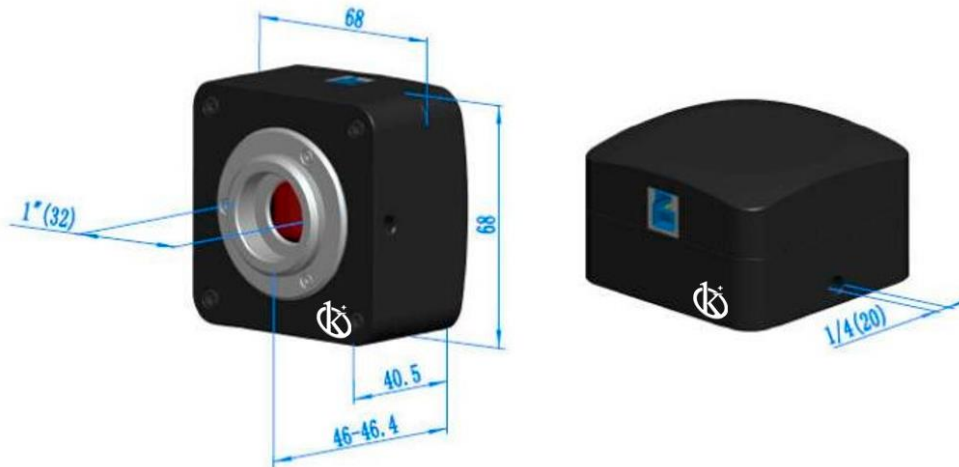
|                       |                        |
|-----------------------|------------------------|
| Operating Temperature | -10 °C~ 50 °C          |
| Storage Temperature   | -20 °C~ 60 °C          |
| Operating Humidity    | 30~80%RH               |
| Storage Humidity      | 10~60%RH               |
| Power Supply          | DC 5V over PC USB Port |

## SOFTWARE ENVIRONMENT

|                  |                                                                |
|------------------|----------------------------------------------------------------|
| Operating System | Support Microsoft Windows XP / Vista / 7 / 8 / 10(32 & 64 bit) |
|                  | OS X (Mac OS X), Linux                                         |
| PC Requirements  | CPU: Equal to Intel Core2 2.8GHz or Higher                     |
|                  | Memory: 2GB or More                                            |
|                  | USB port: USB2.0 High-speed Port                               |
|                  | Display: 17" or Larger                                         |
|                  | CD-ROM                                                         |

## Dimension of YRA59.2213 Series Camera

YRAA59.2213 Series body, made from CNC aluminum alloy, ensures a heavy duty, workhorse solution. The camera is designed with a high quality IR-CUT to protect the camera sensor. No moving parts included. This design ensures a rugged, robust solution with an increased lifespan when compared to other industrial camera solutions..



## How To Choose C-Mount According to Digital Camera SensorSize

To choose camera adapter (C-Mount) or eyepiece adapter correctly, please refer to the quick table "Digital Camera Sensor Size & C-Mount". Choose the adapter's (C-Mount) magnification according to your camera's sensor size, you can get the best view field under camera watching.

Or you can specify the cameras choosed, and its usage (for Microscope or for Telescope), Opto-Edu sales manager will assist you to choose adapters correctly.

| Digital Camera Sensor Size & C-Mount |               |                    |
|--------------------------------------|---------------|--------------------|
| Sensor Size                          | Diagonal Size | C Mount Compltable |
| 1"                                   | 16mm          | 1.0x               |
| 2/3"                                 | 10.6mm        | 0.75x/0.63x        |
| 1/1.8"                               | 8.8mm         | 0.5x/0.55x         |
| 1/2"                                 | 8mm           | 0.5x               |
| 1/2.5"                               | 6.4mm         | 0.5x               |
| 1/2.8"                               | 5.7mm         | 0.5x               |
| 1/3"                                 | 5.3mm         | 0.3x               |
| 1/4"                                 | 4mm           | 0.3x               |

Remark: 1"=16mm For Digital Camera's Diagonal Size



**#Letsgivemore** ♥  
 Thanks to your purchase, a donation will be made to a non-profit foundation that fights against breast cancer and helps most vulnerable communities.



All rights reserved © KALSTEIN France S. A. S.,  
 2 Rue Jean Lantier • 75001 Paris •  
 +33 1 78 95 87 89 / +33 6 80 76 07 10 •  
<https://kalstein.eu>  
**KALSTEIN FRANCE, S. A. S**





### Packing List of YR0A59.2213 Series Camera

#### Standard Outfit

|   |                                                                              |
|---|------------------------------------------------------------------------------|
| A | Carton L:52cm W:32cm H:33cm (20pcs, 12~17Kg/ carton), not shown in the photo |
| B | Gift box L:15cm W:15cm H:10cm (0.5~55Kg/ box)                                |
| C | Digital camera                                                               |
| D | High-speed USB2.0 A male to B male gold-plated connectors cable /2.0m        |
| E | CD (Driver & utilities software, Ø12cm)                                      |

#### Optional Accessory

|   |                                                                         |                                 |                               |                   |                 |
|---|-------------------------------------------------------------------------|---------------------------------|-------------------------------|-------------------|-----------------|
| F | Focus Adjustable Eyepiece Adapter                                       | For Microscope                  | 0.37x, C-Mount to Dia.23.2mm  |                   | YR0A55.2202-A37 |
|   |                                                                         |                                 | 0.50x, C-Mount to Dia.23.2mm  |                   | YR0A55.2202-A50 |
|   |                                                                         |                                 | 0.75x, C-Mount to Dia.23.2mm  |                   | YR0A55.2202-A75 |
|   |                                                                         | For Telescope                   | 0.37x, C-Mount to Dia.31.75mm |                   | YR0A55.2204-A37 |
|   |                                                                         |                                 | 0.50x, C-Mount to Dia.31.75mm |                   | YR0A55.2204-A50 |
|   |                                                                         |                                 | 0.75x, C-Mount to Dia.31.75mm |                   | YR0A55.2204-A75 |
| G | Focus Fixed Eyepiece Adapter                                            | For Microscope                  | 0.37x, C-Mount to Dia.23.2mm  |                   | YR0A55.2202-F37 |
|   |                                                                         |                                 | 0.50x, C-Mount to Dia.23.2mm  |                   | YR0A55.2202-F50 |
|   |                                                                         |                                 | 0.75x, C-Mount to Dia.23.2mm  |                   | YR0A55.2202-F75 |
|   |                                                                         | For Telescope                   | 0.37x, C-Mount to Dia.31.75mm |                   | YR0A55.2204-F37 |
|   |                                                                         |                                 | 0.50x, C-Mount to Dia.31.75mm |                   | YR0A55.2204-F50 |
|   |                                                                         |                                 | 0.75x, C-Mount to Dia.31.75mm |                   | YR0A55.2204-F75 |
| H | Adaptor Rings Dia.23.2mm to 30.0mm For 30.0mm Microscope Eyepiece Tube  |                                 |                               | YR0A55.2203-30    |                 |
| I | Adaptor Rings Dia.23.2mm to 30.5mm For 30.5mm Microscope Eyepiece Tube  |                                 |                               | YR0A55.2203-30.5  |                 |
| J | Adaptor Rings Dia.23.2mm to 31.75mm For 31.75mm Telescope Eyepiece Tube |                                 |                               | YR0A55.2203-31.75 |                 |
| K | Calibration Stage Micrometer                                            | X=0.01mm/100Div.                |                               |                   |                 |
|   |                                                                         | X,Y=0.01mm/100Div               |                               |                   |                 |
|   |                                                                         | X=0.01mm/100Div., 0.10mm/100Div |                               |                   |                 |



#Letsgivingmore

Thanks to your purchase, a donation will be made to a non-profit foundation that fights against breast cancer and helps most vulnerable communities.



All rights reserved © KALSTEIN France S. A. S.,  
 2 Rue Jean Lantier • 75001 Paris •  
 +33 1 78 95 87 89 / +33 6 80 76 07 10 •  
<https://kalstein.eu>  
**KALSTEIN FRANCE, S. A. S**



## Camera Connect To Microscope

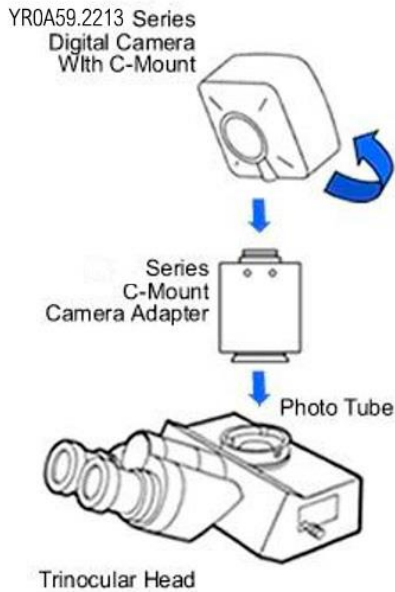


YR0A55.2002  
C-Mount to 23.2mm Adapter For  
Microscope

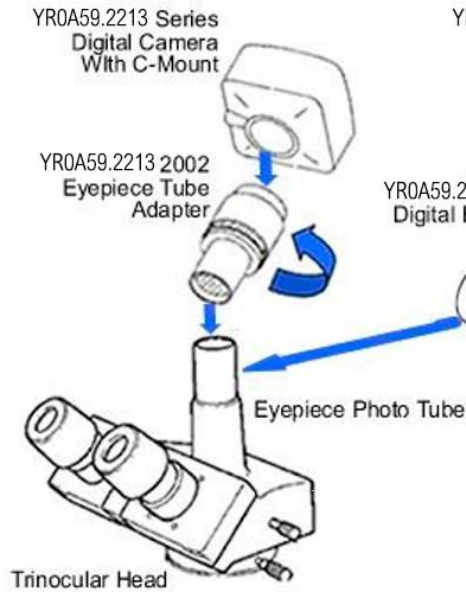
YR0A55.2004  
C-Mount to 31.75mm Adapter For  
Telescope

### How Camera Connect To Microscope

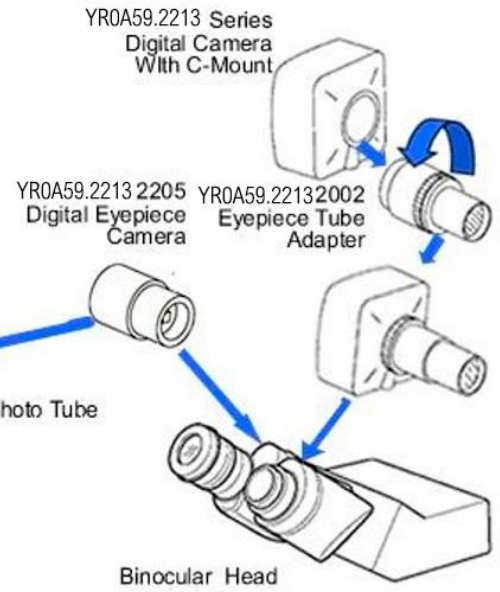
#### 1. To Trinocular Microscope On Straight Photo Tube



#### 2. To Trinocular Microscope On Eyepiece Photo Tube



#### 3. To Binocular Microscope On Eyepiece Tube



#Letsgivemore ♡

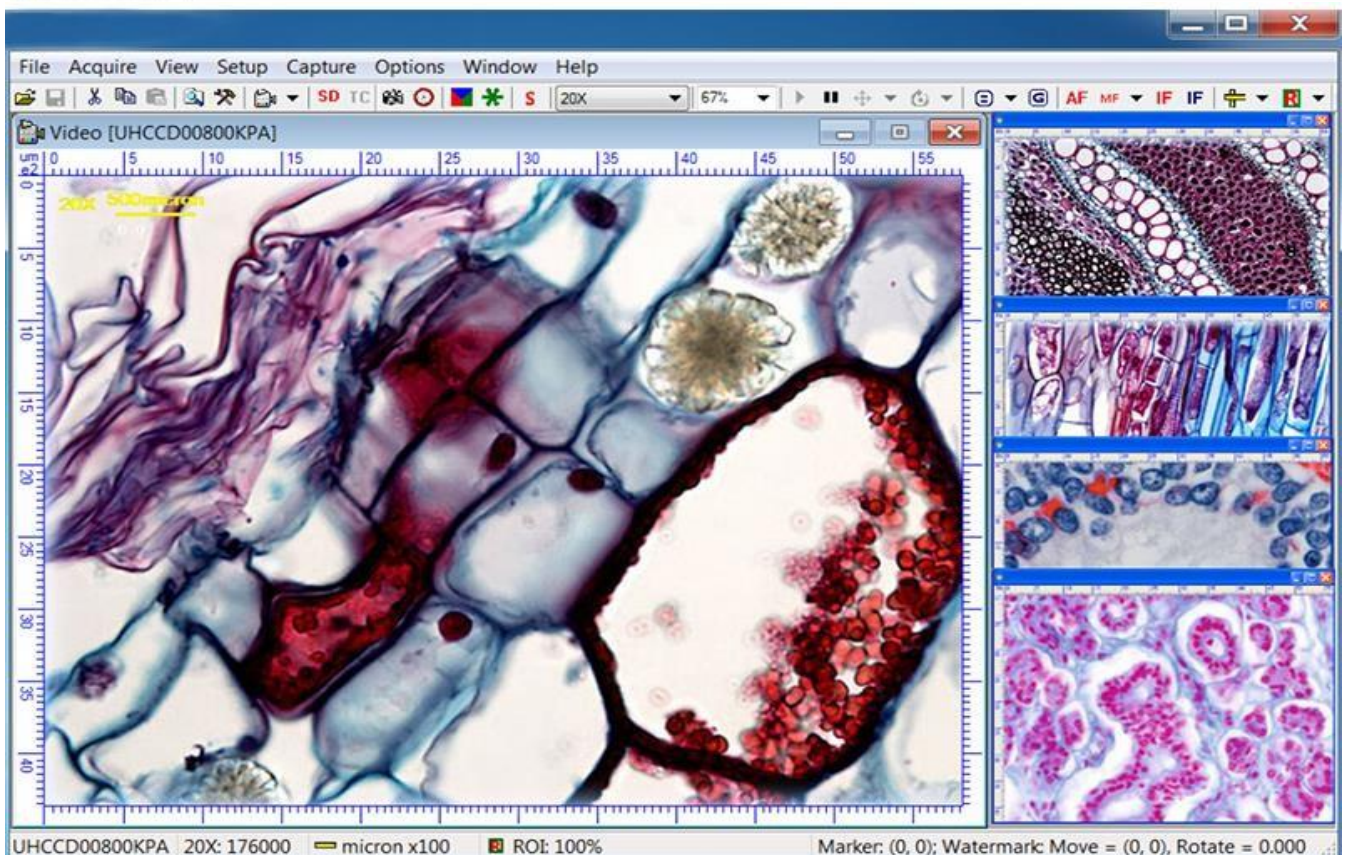
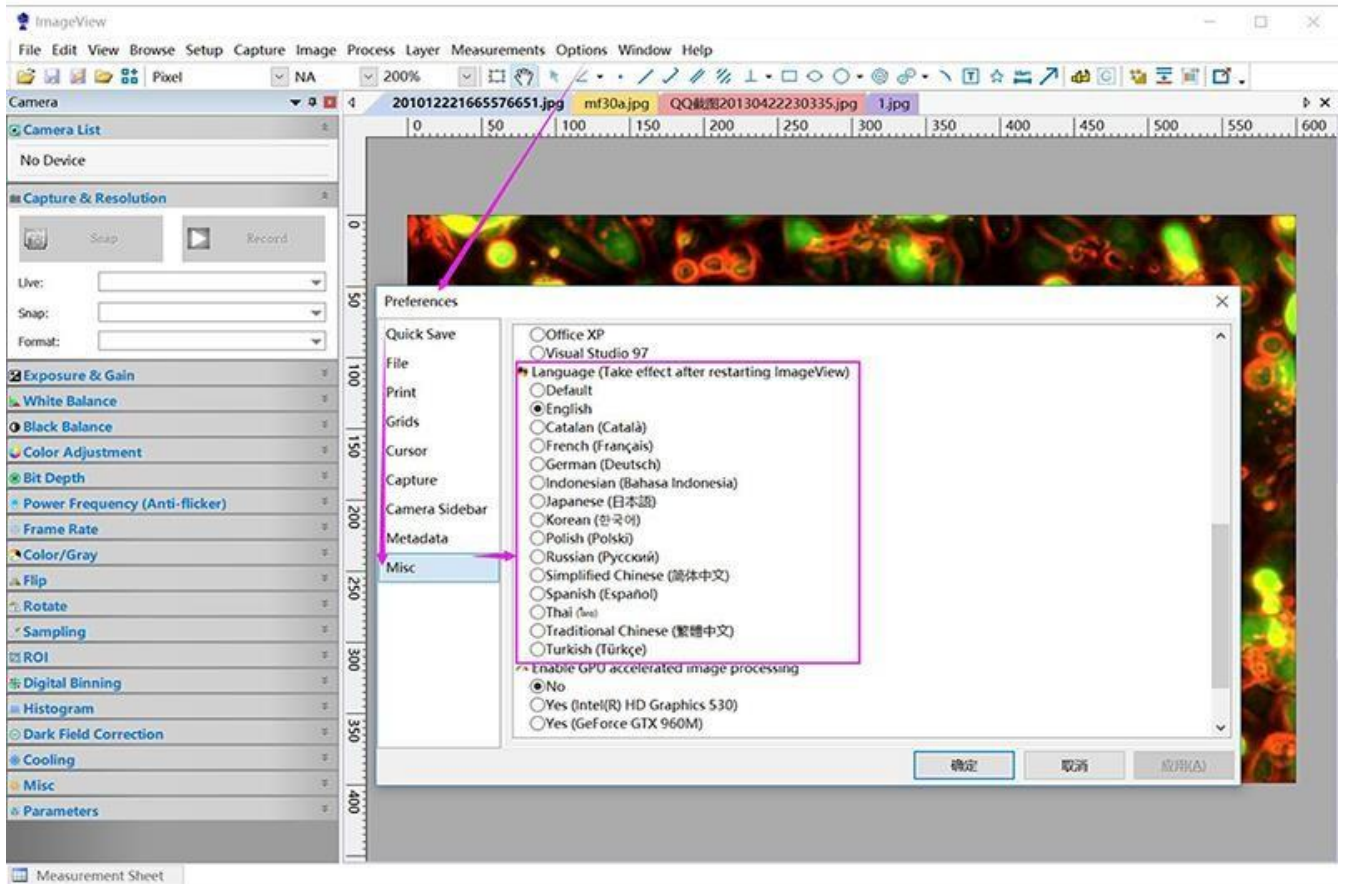
Thanks to your purchase, a donation will be made to a non-profit foundation that fights against breast cancer and helps most vulnerable communities.



All rights reserved © KALSTEIN France S. A. S.,  
2 Rue Jean Lantier • 75001 Paris •  
+33 1 78 95 87 89 / +33 6 80 76 07 10 •  
<https://kalstein.eu>  
KALSTEIN FRANCE, S.A. S







#Letsgivemore

Thanks to your purchase, a donation will be made to a non-profit foundation that fights against breast cancer and helps most vulnerable communities.

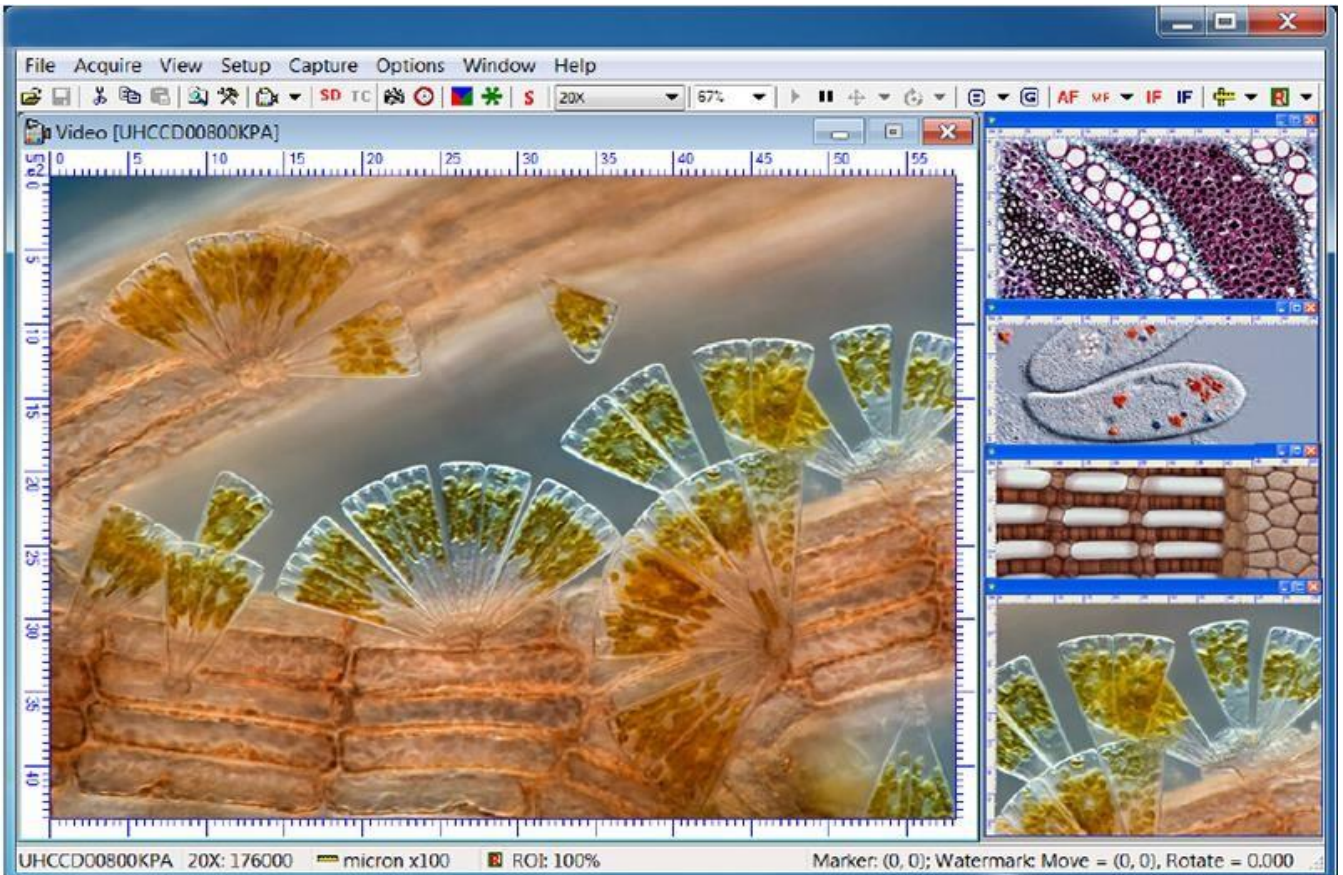
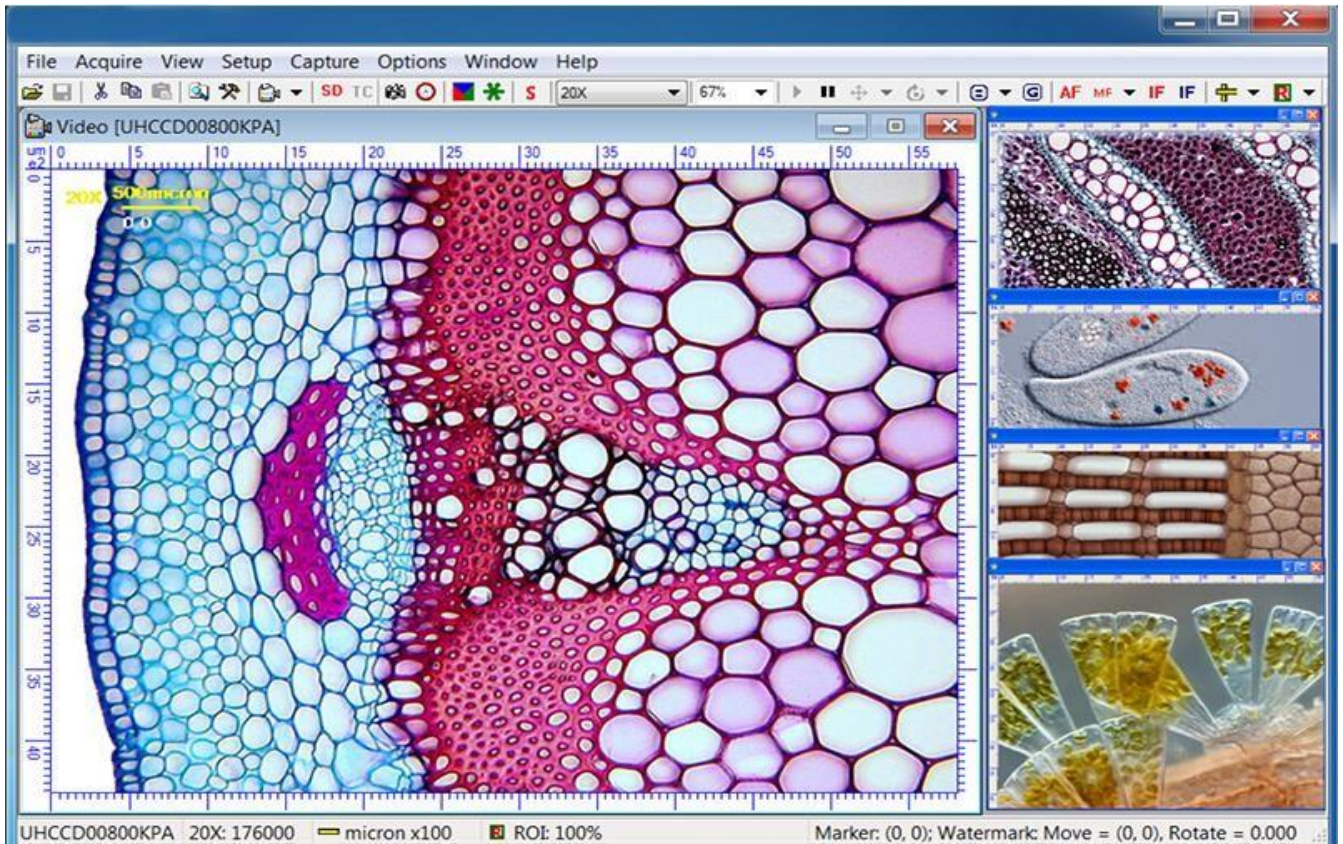


All rights reserved © KALSTEIN France S. A. S.,  
2 Rue Jean Lantier • 75001 Paris •  
+33 1 78 95 87 89 / +33 6 80 76 07 10 •  
<https://kalstein.eu>  
KALSTEIN FRANCE, S.A. S





## Image View Software for Windows



**#Letsgivemore** ❤️

Thanks to your purchase, a donation will be made to a non-profit foundation that fights against breast cancer and helps most vulnerable communities.



All rights reserved © KALSTEIN France S. A. S.,  
 2 Rue Jean Lantier • 75001 Paris •  
 +33 1 78 95 87 89 / +33 6 80 76 07 10 •  
<https://kalstein.eu>  
**KALSTEIN FRANCE, S.A. S**







# Kalstein®

A different accompaniment, at your service

#LETSGIVEMORE 

**WITH THE  
ACQUISITION  
OF A KALSTEIN  
EQUIPMENT**

YOU MAKE A CONTRIBUTION TO:



Fundación  
Jacinto Convit

<https://www.jacintoconvit.org/>



<https://onetreepanted.org>



**Humatem**

Solidarité et coopération  
biomédicale

<https://www.humatem.org/>

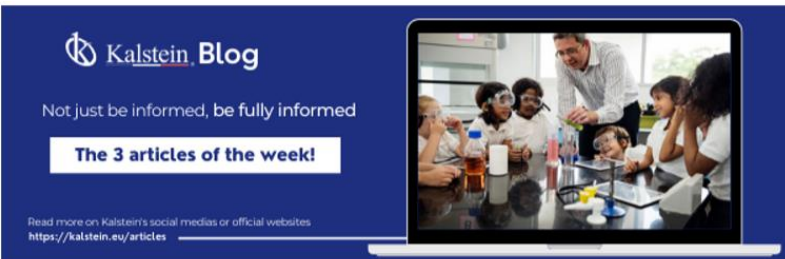


**MANIAPURE  
FOUNDATION USA**

<https://www.maniapurefoundation.org/>



**Articles Kalstein**  
(Social Networks and Official Websites)

**Kalstein Blog**  
Not just be informed, be fully informed  
**The 3 articles of the week!**  
Read more on Kalstein's social medias or official websites  
<https://kalstein.eu/articles>

**1**  
Read this ARTICLE NOW



**How does the climate affect your microscope?**  
Microscopes are one of the most sensitive pieces of laboratory equipment. They require a controlled environment (temperature, humidity, vibration) to ensure optimal performance. This is why it is essential to use a laboratory refrigerator to maintain the ideal conditions for your microscope.

**Kalstein Blog**  
**Article of the week:**  
How does the climate affect your microscope?  
Read more on Kalstein's social medias or official websites  
<https://kalstein.eu/articles>

**2**  
Read this ARTICLE NOW



**What is the importance of the laboratory refrigerator?**  
Refrigerators are one of the most important pieces of laboratory equipment. They are used to store and maintain samples at low temperatures, ensuring their integrity and preventing degradation. A laboratory refrigerator is essential for any laboratory that works with biological or chemical samples.

**Kalstein Blog**  
**Article of the week:**  
What is the importance of the laboratory refrigerator?  
Read more on Kalstein's social medias or official websites  
<https://kalstein.eu/articles>

PARIS - FRANCE  
**HEADQUARTER**  
2 Rue Jean Lantier  
75001 Paris - France

**Tlf:** +33 (0) 01 78 95 87 89  
**Cel:** +33 (0) 6 80 76 07 10  
[sales@kalstein.eu](mailto:sales@kalstein.eu)

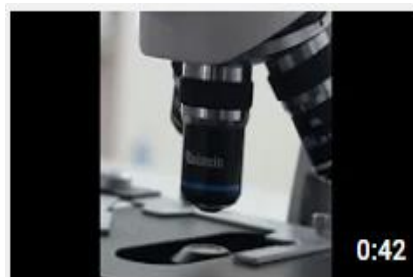
<https://kalstein.eu/>  
<https://www.kalstein.fr/>

**Kalstein Training Videos**  
(Youtube Channel and Official Websites)



**Kalstein France - Jacinto Convit Foundation / Allianc...**

23 views • 3 years ago



**Kalstein's Microscopes**

445 views • 1 week ago

