

Hangzhou Yooning Instrument Co.,Ltd.



GENERAL CATALOGUE

2022-2023

Professional manufacturer engaged in temperature control, sample pretreatment for life science.

Enterprise Profile

Hangzhou Yooning Instrument Co., Ltd. is an ISO9001 certified high-tech enterprise specializing in R&D, production, sales and service of laboratory instruments and life science instruments, located in Hangzhou City, Zhejiang China. Our main products are Dry Bath Incubator (block heater), Centrifuge, Mixer, Shaker, Micro-Spectrophotometer, PCR and etc., which are commonly used in scientific research labs, medical industry, environment, food safety and so on. Yooning has strong distributor network not only in our domestic market, but also overseas countries like Japan, Singapore, Indonesia, India, Italy, Germany, UK, Turkey, Argentina, Brazil, the USA, ect. Yooning Instruments are becoming more and more popular due to good quality and excellent aftersales service.



Values

Quality first, Service-oriented,
Integrity, Innovation



Mission

Make science experiments easier



Vision

Committed to
be a leading supplier in
Temperature-control, Mixing,

/// Honor



National High-Tech
enterprise



CE certified



ISO certified



Patents

CONTENTS

01 Life Sciences

NanoOne Microspectrophotometer	04
PC-96 Gradient PCR	05
Grinder-96 High-throughput Homogenizer	06

02 Incubators

DC-100/DH-100 Heated Lid Dry Bath Incubator	07
G100 Dry Bath Incubator	08
GA150 Dry Bath Incubator	09
GH-100 / GC-100 Dry Bath Incubator	11
Mini Dry Bath Incubator	12
Water Bath series	14
WF80-2 Microplate Incubator	15

03 Sample Mixing

HC-100 / HH-100 Thermo Shaker Incubator	16
WZ80-2 Microplate Thermo Shaker	18
MIX-S Mini Vortex Mixer	19
MIX-2500 Mini Vortex Mixer	20
HX-3000 Vortex Mixer	21
HD-2500 Multi-tube Vortex Mixer	22
WZ-4 Microplate Shaker	23
VM-100 Rotating Mixer	24
VS-100 Decoloring Shaker	25
RT-20 3D Rotating Shaker	26
RM-80(D) Lab Roller Mixer	27
TM-80 Rotating Mixer	28

04 Centrifuges

Mini-7KS Combination Rotor Centrifuge	29
Mini Centrifuge	30
Mini Centrifuge	31
CF-1542 High Speed Centrifuge	32
CF-1524R Refrigerated Centrifuge	33
MC-15K Micro High Speed Centrifuge	34
MP-2500 Microplate Centrifuge	35

05 Sample concentrators

DC150-1/-2 Sample Concentrator	36
DC150-1A Sample Concentrator	38
DC150-1B Visible Sample Concentrator	39

06 Shakers

NS-9 Incubator Shaker	40
NS-16 Incubator Shaker	41
WS-100 Water Bath Shaker	42
CS-200E Orbital Shaker	43
CS-100/200 Orbital Shaker	44
RS-100E Rocker Shaker	45
RS-100 Rocker Shaker	46

07 Magnetic Stirrers

HS-350C Hotplate Magnetic Stirrer	47
HS-350 Hotplate Magnetic Stirrer	48
HS-8 Hotplate Magnetic Stirrer	49
S-8 Magnetic Stirrer	50
OS-2200(D) Overhead Stirrer	51

08 Others

MJ-800(D) Bacti-cinerator Sterilizer	52
GS-300(D) Glass Bead Sterilizer	53
MiniH-100P Biological Indicator Incubator	54
VP-26(D) Vacuum Suction System	55
BC-108 Blue Light Transilluminator	56

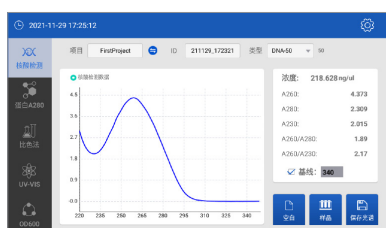
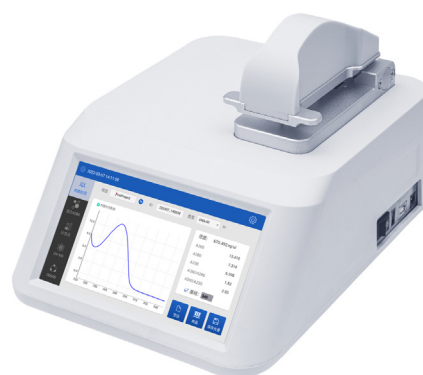
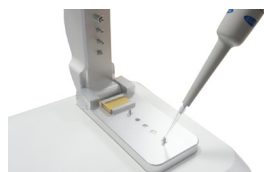
NanoOne Microspectrophotometer

Life Sciences

• Sample pedestal



• Drop sample



• Detection result

Features

- Friendly Android operation system, 7-inch touched screen
- Cuvette slot available for bacteria/microbe concentration test
- Measurement without dilution, test result display and read easily
- Long life's Xenon flash lamp
- Only 0.5 ~ 2 μ l sample volume requested, which can be recycled after test, ideal for precious samples
- Reliable and quick data USB output for analysis
- No computer required for measurement and data storage
- Image and excel table can be output
- External printer is optional

Product parameters

Model	NanoOne	Sample pedestal	304 Stainless steel and Quartz fiber	Measurement Time	< 6S
Sample Volume	0.5~2.0 μ l	Power	48W	Data Export	USB
Light Source	Xenon flash lamp	Operation System	Android	Power Adaptor	12V 4A
Wavelength Accuracy	1nm	Path Length	0.05mm、0.2mm、1.0mm	Standby Power	5W
Absorbance Precision	0.003Abs	Detector	2048 -element linear silicon CCD array	Weight	3.5kg
Dimension (W×D×H)	270×210×196 (mm)	Spectral Resolution	\leq 3nm (FWHM at Hg 546nm)		
Nucleic Acid Range	2~15000ng/ul (ds DNA)	Absorbance Accuracy	1% (7.332 Abs at 260nm)		
Absorbance Range (equaled 10mm)	0.02-300A; Cuvette (OD600):0~12A				
Wavelength	200 ~ 800nm; cuvette (OD600):600 \pm 8nm				

PC-96 Gradient PCR



///Life Sciences

///Introduction

This gradient PCR is ideal for thermal cycling and protocol optimization in molecular biology, medical, food, genetic testing and etc



///Features

- Excellent amplification due to high quality Semiconductor
- Industrial grade operation system, can work 7x24hs
- 30°C gradient range, ideal for protocol optimization
- High precise temperature with good uniformity, quick heating up and cooling down benefit from advanced thermoelectric cooling and PID technologies
- 5-in-1 touch screen, easy to edit, operate, save programs
- Data saved to USB flash memory
- Impact design, small size
- Extremely quiet

///Product parameters

Model	PC-96	Max.Heating Rate	4.5°C / S	Programs stored	>100
Voltage	AC100~240V, 50/60Hz	Max.Cooling Rate	4.0°C / S	Max.Cycles	99
Temperature Control ways	Block or Tube	Gradient	Max. 30°C , Accuracy ±0.3°C	Max.Steps	30
Block Temperature Range	4~99.9°C	Gradient Temperature Accuracy	±0.3°C	Program Pause Function	Yes
Timer	1s~99min59sec/ Infinite	Block Temperature Accuracy	0.1°C	16°C Temperature Holding Function	Infinite
Block Temperature Accuracy	±0.2°C	Heating Lid Temperature range	RT+30°C ~105°C	Real-time operation status	Image-text displayed
Block Temperature Uniformity	±0.25°C	Automatically Heating Lid	Shut off automatically when sample lower than 30°C or program over	Interface Port	USB 2.0
Heating Up Rate (average)	3°C	Timer Increasing / Decreasing	- 599~599 S for Long PCR	Dimension (W×D×H)	200x300x170 (mm)
Cooling down Rate (average)	2.5°C	Temperature Increasing / Decreasing	-9.9~9.9°C for Touchdown PCR	Weight	4.5kg
Capacity	96x0.2ml(PCR plate without/semi skirt), 12x8x0.2ml strips, 8x12x0.2ml strips, 0.2ml tubes (height 20~23mm)				

Grinder-96 High-throughput Homogenizer



///Life Sciences

///Introduction

Grinder-96 homogenizes a broad variety of biological samples due to high frequency vertical vibration, which is controlled by frequency converter. Various adaptors for options accommodating tubes from 2ml to 50ml, commonly used for sample pretreatments in industries of biology, microbiology, medical analysis and etc. Touch screen and UI design are user-friendly and easy-to-operate, it will be a good assistant in a laboratory.



///Features

- Touch screen
- Applied to various samples
- Replaceable tube adaptors
- Maintenance free, low noise
- Reinforced motor with strengthened main shaft
- Adjustable frequency, editable program

///Product parameters

Model	Grinder-96	Acceleration Time	Within 2 sec
Frequency Range	30HZ-70HZ	Deceleration Time	Within 2 sec
Optional Tube Holders	Available: 96*2ml/24*2ml Customized according to needs: 24*5ml/12*15ml/4*25ml/2*50ml	Tube Holder Materials	PTFE / Alloy steel / Aluminium alloy
Grinding beads diameter	0.1-30mm	Safety Guard	Emergency stop button
Size (W×D×H)	460x410x520 (mm)	Voltage	AC 200V-240V 50/60HZ
Grinding beads material	Alloy steel, chrome steel, zirconia, tungsten carbide, quartz sand	Weight	52kg

///Accessories

Grinding Bead	Bead size	Quantity	Material
	3mm	50ml	Stainless steel
	5mm	50ml	Stainless steel

DC-100/DH-100 Heated Lid Dry Bath Incubator



///Incubators



///Introduction

DC-100/DH-100 is a Dry Bath Incubator with heated lid controlled by a microcomputer, excellent temperature control due to advanced semiconductor technology (Peltier-Based), which can work as a thermal cycler. DH-100 can heat, DC-100 can heat and cool, they can be used for sample preservation and rection, DNA amplification and protein denaturation treatment, and etc.

- ◆ DH-100 : Heat with heated lid
- ◆ DC-100 : Heat & Cool with heated lid

///Features

- Impact design, small size
- Heated lid function can be on/off according to needs
- High precise and good uniformity in temperature, fast heating and cooling rate
- 5 inch touch screen display temperature and time, easy to edit, heating lid temperature can be individually set/displayed

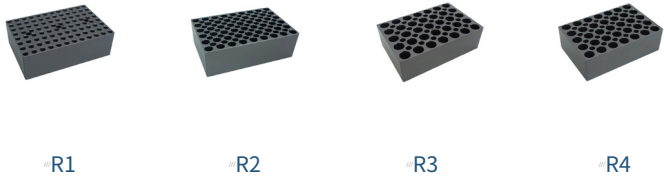
- TFT display
- Temperature uniformity $\leq \pm 0.5^{\circ}\text{C}$
- Heated lid
- Timer

///Product parameters

Model	DC-100	DH-100	Model	DC-100	DH-100	Model	DC-100	DH-100
Voltage	AC100~240V, 50/60Hz		Lid Temperature Accuracy	$\pm 1.0^{\circ}\text{C}$		Max.Steps	10	
Block Temperature Setting Range	R.T. -25°C ~ 100°C	R.T. $+5^{\circ}\text{C}$ ~ 100°C	Block Temperature Uniformity	$\pm 0.5^{\circ}\text{C}$		Max.Cycles	99	
Lid Temperature Setting Range	R.T. $+5^{\circ}\text{C}$ ~ 110°C	R.T. $+5^{\circ}\text{C}$ ~ 105°C	Display Accuracy	0.1 $^{\circ}\text{C}$		Max.Power	200W	250W
Timer	1s~99min59sec (0 means infinite)		Heating Up Rate (R.T. 25°C)	$37^{\circ}\text{C} - 100^{\circ}\text{C} \geq 7^{\circ}\text{C} / \text{min}$		Dimension (W×D×H)	200x300x170 (mm)	
Block Temperature Accuracy	$\pm 0.5^{\circ}\text{C}$		Cooling Rate	$100^{\circ}\text{C} - 37^{\circ}\text{C} \leq 8^{\circ}\text{C} / \text{min}$	---	Weight	3.2kg	

///Optional Blocks

Type	Capacity
R1	96×0.2ml
R2	54×0.5ml
R3	35×1.5ml
R4	35×2.0ml



G100 Dry Bath Incubator

/// Incubators



/// Introduction

G100 is a dry block heater controlled by microcomputer. It can be widely used in sample preservation and reaction, DNA amplification and pre-denaturation of electrophoresis, serum coagulation, etc. in fields of medicine, chemical industry, food safety, quality control and environment.

/// Features

- LED display with timer
- High precision temperature
- Built-in over-temperature protect
- Small size with transparent lid
- Various blocks can protect samples from contamination



Various blocks



Over-temperature protection



High precision



Timer

/// Product parameters

Model	G100	Display Accuracy	0.1°C	Max.Temperature	105°C
Heating Up Rate	≤ 10m (20°C to 100°C)	Temperature Control Range	RT+5°C ~105°C	Power	150W
Temperature Stability @40°C	±0.3°C	Temperature Accuracy	±0.3°C	Weight	1.5kg
Temperature Stability @100°C	±0.3°C	Timer	0~99h59m	Dimension (W×D×H)	160*176*121 (mm)

/// Optional Blocks

Type	Capacity	Type	Capacity
C1	96×0.2ml	C5	18×5.0ml
C2	58×0.5ml	C6	24×0.5ml+30×1.5ml
C3	39×1.5ml	C7	58×6mm
C4	39×2.0ml		

•C1



•C2



•C3



•C4



•C5



•C6



•C7



GA150 Dry Bath Incubator

///Incubators



///GA150-1



///GA150-1A



///GA150-2



///GA150-4

///Introduction

GA150 digital dry bath is controlled by microcomputer, widely used in preservation and reaction of the samples, DNA amplification and pre-denaturation of electrophoresis, serum coagulation, etc.

///Features

- LED display with timer
- Automatic fault detection with buzzer alarm
- Temperature calibration function
- Various blocks, easy to clean and disinfect
- Built-in over-high temperature protection



Various blocks



High precision



Over-temperature protect



Timer

///Product parameters

Model	GA150-1	GA150-1A	GA150-2	GA150-4	Model	GA150-1	GA150-1A	GA150-2	GA150-4
Temperature Control Range	RT+5°C ~150°C				Display accuracy	0.1°C			
Heating Up Rate	≤ 10M (20°C to 100°C)				Timer	0~99h59m			
	≤ 30M (20°C to 150°C)								
Temperature Stability @40°C	±0.3°C				Max.Temperature	150°C			
Temperature Stability @100°C	±0.5°C				Power	200W	400W	600W	
Temperature Stability @120°C	±1°C				Dimension (W×D×H)	220*260*100 (mm)			220*360*100 (mm)

Yooning is committed to manufacturing high quality laboratory equipment.



///D1



///D2



///D3



///D4



///D5



///D6



///D7



///D8



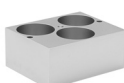
///D9



///D10



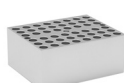
///D11



///D12



///D13



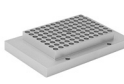
///D14



///D15



///D16



///D17



///D18

Important Notes: D17/D18 are used in GA150-1A

///Optional Blocks

Type	Tube diameter	Capacity	size (W×D×H)	Type	Tube diameter	Capacity	size (W×D×H)
D1	6mm	48	96.5×76.5×50 (mm)	D10	26mm	8	96.5×76.5×50 (mm)
D2	7mm	48	96.5×76.5×50 (mm)	D11	28mm	6	96.5×76.5×50 (mm)
D3	10mm	24	96.5×76.5×50 (mm)	D12	38mm	3	96.5×76.5×50 (mm)
D4	12mm	24	96.5×76.5×50 (mm)	D13	0.2ml tubes	48	96.5×76.5×50 (mm)
D5	13mm	24	96.5×76.5×50 (mm)	D14	0.5ml tubes	48	96.5×76.5×50 (mm)
D6	15mm	12	96.5×76.5×50 (mm)	D15	1.5ml tubes	24	96.5×76.5×50 (mm)
D7	16mm	12	96.5×76.5×50 (mm)	D16	2ml tubes	24	96.5×76.5×50 (mm)
D8	19mm	12	96.5×76.5×50 (mm)	D17	0.2ml	96	96.5×153×33.5 (mm)
D9	20mm	12	96.5×76.5×50 (mm)	D18	Flat	96 Elisa	96.5×153×22.5 (mm)

GH-100 / GC-100 Dry Bath Incubator

///Incubators

///Introduction

GH-100/GC-100 is a microprocessor-controlled device with LCD, can control the temperature precisely, which greatly shortens the experimental time and improves the efficiency. It can be widely used in samples cultivation, preservation and reaction. It has multi-purpose functions such as heating and custom programs to meet the needs of different users.



///Features

- 5 stored-programs, each can run separately, also can be linked and cycled
- A variety of alloy aluminum blocks easy to change
- Fast heating speed, precise and stable
- Controlled by PID, high accuracy and good conformity
- LCD display with timer and temperature
- Temperature calibration
- Buzzer alarm after program over
- GH-100/GC-100 Refer to Page 17 of block list



Various blocks



Over-temperature protect



High precision



Timer

///Product parameters

Model	GH-100	GC-100	Model	GH-100	GC-100
Temperature control mode	Heating membrane	Semi-conductor	Heating Up Rate	≤ 15min(20°C to 100°C)	
Temperature control range	RT+5°C ~100°C	RT-30°C ~100°C	Max.Temperature	100°C	
Temperature accuracy	±0.3°C		Cooling Down Rate	≤ 30min 100-25°C	
Temperature Stability @40°C	±0.3°C			≤ 30min Cooling down 30degrees from room temperature(test under RT26°C)	
Temperature Stability @100°C	±0.3°C		Power	150W	130W
Timer	0~99h59m		Weight	2.8kg	4.3kg
Display accuracy	0.1°C		Dimension (W×D×H)	220x300x170 (mm)	

Mini Dry Bath Incubator

///Incubators

///Introduction

Mini Dry Bath Incubator is controlled by PID, applied to vehicle power supply due to small palm-size and light weight. Widely used in rapid inspection kit or small labs



///Features

- Display with timer and temperature
- DC 12V, built-in over temperature protect
- Automatic failure detection with buzzer alarm
- Easy to change blocks
- 9 Stored programs, each contains 3 segments



Various blocks



Over-temperature protect



High precision



LCD display



///Product parameters

Model	MiniH-100D	MiniH-100L	MiniC-100	Model	MiniH-100D	MiniH-100L	MiniC-100
Temperature Control Range	RT+5°C ~100°C		RT-20°C ~100°C	Max.Temperature	100°C		
Heating Up Rate(20°C to 100°C)	≤ 15m			Max.Power	48W	60W	120W
Temperature Control Accuracy	±0.3°C			Cooling Down Rate	Natural cooling		≤ 30m 100-25°C
Temperature Stability @40°C	±0.3°C						≤ 30m RT- 20°C
Temperature Stability @100°C	±0.3°C			Weight	≤ 1kg		≤ 1.5kg
Display Accuracy	0.1°C			Dimension (W×D×H)	110X160X96 (mm)	110X160X136 (mm)	
Timer	0~99h, 0~99m, 0~99s			Heating Lid	No	Yes	No



M1



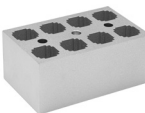
M2



M3



M4



M5



M6



M7



M8

Optional Blocks

Type	Tube Type	Type Capacity	Type	Tube Type	Type Capacity
M1	0.2ml tube	32	M5	Cuette	8
M2	0.5ml tube	24	M6	15ml tube (Working without lid)	6
M3	1.5ml tube	12	M7	50ml tube (Working without lid)	2
M4	2.0ml tube	15	M8	5ml tube (Working without lid)	12

Water Bath series

//Incubators



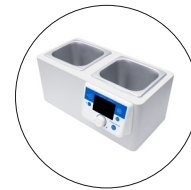
//WH-10



//WH-5



//WH-2



//WH-2A



//WH-3A

//Introduction

Water Bath is a multi-function thermostat water tank controlled by PID. It's an indispensable tool in the fields of pharmaceutical, biochemistry, scientific research, environmental protection and etc.

//Features

- High quality water tank: Wearproof and corrosion-resistant stainless steel coated by Teflon
- With large-diameter drain valve for quickly discharge
- 10 programs stored for fast operation
- Controlled by PID, high precision and tiny fluctuation
- Big size TFT display
- Built-in liquid level sensor with buzzer alarm
- Good uniformity due to a big heating plate fixed under the tank bottom



TFT Display



Overheat protection



Suitable for Various Tubes



Temperature uniformity $\leq \pm 0.3^{\circ}\text{C}$

//Product parameters

Mode	WH-2	WH-2A	WH-3A	WH-5	WH-10
Voltage	AC100~120V/AC200~240V 50~60Hz				
Temperature Control Range	RT. +5~100°C				
Timer	1m~99h59m				
Temp.Accuracy	$\pm 0.3^{\circ}\text{C}$				
Uniformity	$\pm 0.3^{\circ}\text{C}$ (37°C)				
Capacity	2L	2Lx2	2Lx3	5L	10L
Power	250W	500W	750W	550W	1000W
Tank Dimension(W×D×H)	135x150x150 (mm)	2 ×135x150x150 (mm)	3 ×135x150x150 (mm)	155x300x150 (mm)	240x300x150 (mm)
Dimension(W×D×H)	205x253x204 (mm)	415x253x204 (mm)	625x253x204 (mm)	205x395x210 (mm)	290x395x210 (mm)
Weight	2	4	5.5	3.5	8.75
Drain Method	Manual	Drain pump		Manual	Drain outlet
Liquid level alarm	Yes	Yes	Yes	Yes	Yes

WF80-2 Microplate Incubator

///Incubators

///Introduction

This incubator is designed for microplates, controlled by PID with timer and incubation. Compatible with different plates like ELISA 96 /384 wells plates, cell culture plates (24 /48 /96 wells).



///Features

- LCD display, friendly design
- Heated lid ensures temperature uniformity
- Controlled by PID, stable temperature
- Buzzer alarm when program ends up
- Safe to use

///Product parameters

Model	WF80-2	Heating Up Rate	< 15min(20°C to 80°C)	Max.Power	150W
Temperature Control Range	RT +5~80°C	Timer	0~99h59m	Weight	4.0kg
Temperature Accuracy	±0.3°C	Capacity	2 plates	Dimension (W×D×H)	280x278x150 (mm)
Temperature Uniformity	±0.3°C	Voltage	AC100-230V 50-60Hz		

HC-100 / HH-100 Thermo Shaker Incubator

/// Sample Mixing

/// Introduction

This thermo mixer (HH-100) /cooling thermo shaker (HC-100) is designed for a variety of molecular biology applications that require consistent and precise results. Due to the combination of DC brushless motor and semiconductor cooling technology, it greatly shortens the time of experiment and improves the efficiency. It is an ideal device for sample incubation, catalysis, mixing and preservation.



5 programmable Programs built-in, Linkable, recyclable



BLDC Motor Maintenance free



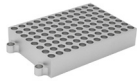
High precision



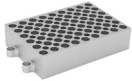
Various blocks

/// Product parameters

Model	HC-100	HH-100	Mode	HC-100	HH-100	Model	HC-100	HH-100
Temperature Control Modes	Semi-conductor	Heating membrane	Display Accuracy	0.1°C		Cooling Down Rate (by time)	Rate (by time) ≤ 25min (Cool down from 30 °C to 10 °C)	
Temperature Control Range	RT-20°C ~100°C	RT+5°C ~100°C	Speed Range	300~1500 rpm	300~2000 rpm		≥ 7°C /min (100°C to 20°C)	
Temperature Accuracy	±0.3°C		Amplitude	2mm (Horizontal rotation)		Max.Power	150W	180W
Temperature Stability @40°C	±0.3°C		Timer	0~99h59m		Dimension (W×D×H)	220x300x170 (mm)	
Temperature Stability @100°C	±0.3°C		Heating Up Rate	<15min(25°C ~100°C)		Weight	7.9 kg	8.3kg



A1



A2



A3



A4



A5



A6



A7



A8



A8-2



A9



A10



A11



A12



A13

Optional lids



L-A



L-B



L-C

Item	Model	Compliance to
Lid	L-A	A1-A9
Lid	L-B	A10-A11
Lid	L-C	A12-A14

HC-100/HH-100/GH/GC-100 Series blocks

Optional Blocks								
Type	Capacity	Max. Temperature	Type	Capacity	Max. Temperature	Type	Capacity	Max. Temperature
A1	96x0.2ml PCR plate	100°C	A6	24xφ12mm tubes	100°C	A10	96x0.2ml Elisa(Flat bottom)	100°C
A2	54x0.5ml tubes	100°C	A7	32x0.2ml+25x1.5ml tubes	100°C	A11	24x5ml	100°C
A3	35x1.5ml tubes	100°C	A8	32x0.2ml+10x0.5ml+15x1.5ml tubes	100°C	A12	12x15ml	100°C
A4	35x2.0ml tubes	100°C	A8-2	32x0.2ml+10x0.5ml+15x2.0ml tubes	100°C	A13	6x50ml	100°C
A5	20x0.5ml+15x1.5ml tubes	100°C	A9	103x67x30(water tank)	100°C	A14	12x10ml	100°C

WZ80-2 Microplate Thermo Shaker

Sample Mixing



Introduction

This Microplate thermo shaker is designed for microplates, controlled by PID. With timer, incubation, shake functions , it is suitable for different plates like ELISA 96 /384 wells plates, cell culture plates (24 /48 /96 wells).

Features

- LCD display
- Heating lid ensures temperature uniformity
- Controlled by PID, stable temperature
- Buzzer alarm when program ends up
- Brushless motor,maintenance free
- Safe to use



LCD Display



Timer/Pulse Short mixing



For 2 plates, small size



Heating lid

Product parameters

Model	WZ80-2	Timer	0~99h59m	Voltage	AC100-230V 50-60Hz
Temperature Control Range	RT+5~80°C	Capacity	2 plates	Weight	6.2kg
Temperature Control Accuracy	±0.3°C	Speed	200~1500 rpm	Dimension (W×D×H)	280x278x150 (mm)
Temperature Uniformity	±0.3°C	Amplitude	2mm(Horizontalrotation)		
Heating Up Rate	< 15min(20°C to 80°C)	Max.Power	150W		

MIX-S Mini Vortex Mixer

Sample Mixing

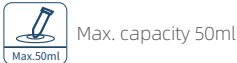
Introduction

When you look for a basic, fixed speed vortex mixer with a small footprint for your limited bench space, look no further than our MIX-S. Despite its small size, the MIX-S has a stable base to remain in place when in use. When you press your tube down on the top cup, the 3500rpm and small 4mm orbit create a 'vibratory' motion to quickly and efficiently mix most tube sizes



Features

- Small and light
- Suitable for vortex shaking micro tubes and centrifuge tubes
- High speed with 3500rpm
- External 12V voltage adapter, easy to carry
- Rubber suction feet, makes vibration stable and reliable



Product parameters

Model	MIX-S	Max.Capacity	50ml	Power	12W
Speed	3500rpm	Motor Power	5W	Dimension(W×D×H)	98.5 x101 x 66 (mm)
Amplitude	4mm (Horizontal vibration)	Voltage	DC12V	Net.Weight	0.55kg

MIX-2500 Mini Vortex Mixer

Sample Mixing

Introduction

MIX-2500 is a high efficiency benchtop mixer, mixing with two operation modes "Touch" and "Continuous" vortex for samples like tissues, cells, bacterial liquid, chemical reagents, etc. It is compatible with 0.2-50ml test tubes and small vessels less than 108mm in diameter for life science, physical and chemical analysis fields.



Feature

- Multifunction and shockproof, suitable for high-speed mixing
- Touch and continuous mixing
- Adjustable speed with 0-2800rpm
- Reliable and durable, easy to exchange optional platforms for tubes



Adjustable speed



Near silence



Optional platforms

Product parameters

Model	MIX-2500	Running Modes	Contious/ Touch vortex	Power	60W
Operation	Touch/Continuous	Speed	0 ~2800rpm	Dimension(W×D×H)	134 x 156 x 150 (mm)
Orbital Diameter	3mm	Timer	/	Net.Weight	2.4kg
Shaking Way	Horizontal vibration	Voltage	AC 220V / AC 110V, 50/60Hz	Optional accessories	Refer to list below

Optional Accessories:

Type	Accessories
X1	Rubber cup used with X2, for tubs and small vessels less than 30mm in diameter
X2	Plastic round tray, used with all other accessories
X3	Rubber dimpled mat used with X2,for tubes or small vessels less than 108mm in diameter.
X4	Foam Block used with X2,for 0.2ml test tube, Φ5mm*96
X5	Foam Block used with X2, for 0.5ml test tube, Φ6.6mm*37
X6	Foam Block used with X2, for 1.5/2.0ml test tube, Φ9.8mm*24
X7	Foam Block used with X2, for 15ml test tube, Φ14mm*8
X8	Foam Block used with X2, for 50ml test tube, Φ26.2mm*4
X9	Microplate tray for various micro plates
X11	Foam Block used with X2, for 0.2ml*16+0.5ml*12+1.5/2.0ml*12 test tube
X12	Foam Block used with X2, for 5ml/7ml*10 test tube



HX-3000 Vortex Mixer

///Sample Mixing

///Introduction

HX-3000 is a high efficiency and versatile desktop mixer which is suitable for various mixing and vortex. It is compatible with various lab microtubes, such as PCR plat, deep-hole plate and microplate. The combination of mixing and intelligent operation makes the operation simple, safe and convenient.



///HX-A1



///HX-A2



///HX-A3



///HX-A4



///HX-A5

///Features

- Five preset buttons on faceplate for quick operation
- Stored programs for multi-purpose use
- Maintenance-free brushless motor
- Quick and controllable mixture improves experiments repeatability and uniformity



Multiple Programs



Vortex shaker



Suitable for Various tubes



LCD display

///Product parameters

Model	HX-3000	Noise	<50dB
Speed	200~3000rpm	Weight	7.9kg
Vortex (Max.) Speed	3500rpm	Dimension (W×D×H)	220x300x170 (mm)
Timer	0s~99h59m	Voltage	AC100 ~ 230V, 50~60Hz
Amplitude	3mm	Power	45W

///Optional tube rack

HX-A1	96x0.2ml tube rack, suitable for 0.2ml PCR tube, PCR tube strip, 96-hole PCR plat (with Semi-skirt and no skirt)	HX-A4	8x10/15ml +3x5/7ml tube rack
HX-A2	24x0.5ml tube rack	HX-A5	6x50ml tube rack
HX-A3	24x1.5/2.0ml tube rack	Notes:	384-hole PCR plate, microplate and deep-well plates can be used without rack

HD-2500 Multi-tube Vortex Mixer

Sample Mixing

Introduction

HD-2500 is a good choice for mix up to 96 samples at the same time. A variety of accessories are available for broad range of applications required in many labs.



Pulse/short mixing/Continuous mixing



Compatible with different test tubes



Features

- 96 samples at the same time
- LCD display speed/timer/microprocessor control
- The maximum speed up to 2500rpm
- Maintenance free brushless motor

Product parameters

Model	HD-2500	Intermittent Interval Timer	1 ~ 99S	Power	75W
Speed Range	500 ~ 2500rpm	Intermittent Running Timer	1~999S	Dimension (W×D×H)	426x246x474 (mm)
Speed Control Accuracy	±1rpm	Maximum Load	4.5kg	Weight	17kg
Amplitude	3.6mm	Top Fixing Panel Size (W×D)	310×205mm		
Timer	0s ~ 99h59m	Voltage	AC 100 ~ 230V, 50/60Hz		

Optional accessories

Type	Picture	Specifications	Capacity	Dimension (mm)	Type	Picture	Specifications	Capacity	Dimension (mm)
S1		Φ10mm - Φ12mm	50	245×132×45 mm	S6		Tray mat (Upper)	---	305×188.5×50 mm
S2		Φ11mm - Φ13mm	50	245×132×45 mm	S7		Tray mat (lower)	---	305×204×25 mm
S3		Φ14mm - Φ17mm	50	245×132×45 mm	S8		Φ36mm - Φ40mm	10	245×152×45 mm
S4		Φ22mm - Φ26mm	15	245×132×45 mm	S9		Plastic rack for 17mm tubes	96	296.5×202.5×50 mm
S5		Φ25mm - Φ29mm	15	245×132×45 mm	S10		Plastic rack for 26mm tubes	48	280×214×53 mm

WZ-4 Microplate Shaker

///Sample Mixing



///Introduction

This shaker is designed for plateslike Elisa plate(96/384 microplate) , cell culture plate(24/48/96 plate), providing adjustable speed for a broad range of applicationsin immunoassay or dyeing experiments. Safe for use in cool rooms and incubators.

///Features

- LCD display, easy to use
- Equipped with high quality power adapter
- Unique design with four rubbers buffer at corners providing stable shake
- Controlled by PID, precise speed, stable and quiet



LCD display



Timer/Pulse/short mixing



4 plates



Four rubbers buffer at 4-corner make running stable

///Product parameters

Model	WZ-4	Weight	5.6kg
Speed Range	200~1500rpm	Weight	AC100-230V 50-60Hz
Timer	0~99h59m	Max.Power	75W
Amplitude	3mm (Horizontal rotation)	Dimension (W×D×H)	280x278x126 (mm)

VM-100 Rotating Mixer

///Sample Mixing

///Introduction

VM-100 is a test tube rotator with adjustable rotation speed, hovering and shaking functions. It provides efficient and gentle mixing, keeping biological samples in suspension. It is applied to prevent blood clotting, latex diagnosis, immunoprecipitation, etc., which is ideal for laboratory research fields such as molecular biology, biochemistry, clinical, histochemistry, etc.



///Features

- Suitable for all test tubes of any 1.5ml~50ml
- Free combination of test tube clamps
- 2 additional programmable settings (6 segments editable per self-program)
- 10 different built-in programs (rotation and vibration)
- Adjustable speed and time of vibration at any angle
- For use in cold storage or incubators



Multiple racks options



Programmable



Long life and maintenance-free



LCD Display

///Product parameters

Model	VM-100	Operation mode	Circular motion	Voltage	DC12V	Dimensions (W×D×H)	440 x135 x280 (mm)
Speed	1rpm ~99rpm	Timer	1min~99h59m	Power	12W	Net weight	2 kg

///Optional accessories

Type	Capacity	Type	Capacity
L1	15ml*22	L4	50ml*12
L2	50ml*12	L5	1.5/2.0ml*36
L3	15ml*12	L6	50ml*4+15ml*8+1.5/2.0ml*16



/// L1



/// L2



/// L3



/// L4



/// L5



/// L6

VS-100 Decoloring Shaker

///Sample Mixing

///Introduction

VS-100 is widely used in experiments where samples are oscillated in solution, such as:

The immobilization of separated bands of electrophoretic gels

Oscillation of Coomassie Brilliant Blue staining or destaining Fixation and development of silver nitrate staining

Fixation and development of X-ray film in the experiment Further processing of the cellulose membrane after electrophoretic transfer

Reaction and staining of Antibodies

Molecular hybridization

Cell culture



///Features

- Large LCD display shows all parameters
- Start-up and acceleration or deceleration is very smooth, which ensures the safety of samples
- Non-deformed, easy to clean, spill-proof metal steel tray



Multi-program, adjustable speed and angle



Long life and maintenance-free

///Product parameters

Model	VS-100	Swing Angle	1-25° Adjustable	Platform Size	252x170 mm
Voltage	DC12V	Timer	1min ~ 99h59min	Dimensions (W×D×H)	135x440x280 (mm)
Speed	1-25rpm	Power	12W	Weight	2kg

RT-20 3D Rotating Shaker

Sample Mixing

Introduction

This 3D rotating shaker is designed to provide precise speeds and tilt angles required for a broad range of molecular and biological mixing applications. The gentle rotation can offer an ideal mixing for various tubes, the dimpled mat is compatible for different type tubes, capable of loads 60×1.5ml、30×3ml、21×7ml、17×15ml.



Features

- Ideal shaker for small volume samples, can prevent samples from foaming
- Dimpled rubber mat is compatible with various tubes
- Tilt platform is safe and efficient for mixing samples
- Stable shake, quiet
- Safe for use in cold rooms and incubator



Compatible with various tubes



Quiet



Suitable for cold rooms and incubator

Product parameters

Model	RT-20	Max.Load	0.8kg	Dimension (W×D×H)	170 x 240 x 150 (mm)
Speed	20rpm	Voltage	AC 220V / AC 110V, 50/60Hz	Weight	1.7kg
Rotating Mode	3D rotating at tilt angle 20°	Power	20W	Platform Size	238×172mm

RM-80(D) Lab Roller Mixer





///Sample Mixing

///Introduction
 RM-80(D) is was designed for gently mixing a wide range of tubes. The speed can be set digitally anywhere between 10rpm and 80rpm. In addition to a rolling motion, the RM-80D is mounted slightly off-center to rise and fall in a "see- saw" fashion. These two motions ensure your samples are thoroughly mixed for optimal homogeneity.



///Features

- LED display, easy to operate
- Rolling and swinging two modes, gentle mixing
- Adjustable speed and quiet running
- Suitable for 8mm-200mm diameter tubes
- Suitable for 4°C chamber or 42°C incubator with relative humidity 80%

-  Adjustable speed
-  LED display of speed and time
-  Rolling/Swinging
-  Timer

///Product parameters

Model	RM-80	RM-80D	Model	RM-80	RM-80D
Speed	10rpm-80rpm		Timer	1min ~99h59m	
Running Modes	Rolling	Rolling/Swinging	Voltage	AC 100 ~230V, 50/60Hz	
Amplitude	---	25mm	Power	30W	
Numbers of Rollers	6		Dimensions(W×D×H)	230x440x120 (mm)	
Roller Length	280mm		Weight	3.8kg	
Max.Capacity	4.2kg				

TM-80 Rotating Mixer

Sample Mixing

Introduction

TM-80 is designed to provide stacking rotating plates which doubles the usable surface area; it is much precise with speed adjustment and timer functions. It can be placed in an incubator. The mixer is suitable for tissue culture, extraction, blood sample mixing, radioimmunoassay, glucose, in biological, chemical, animal and plant analysis, clinical experiments and many other aspects.



Features

- LED display of speed and timer
- Compatible with tubes 1.5-50ml
- Rotating plate tilt angle 0 ~ 90°
- Program ends up with beep alarm
- High quality motor
- Gentle mixing
- Tube holder is easy to remove and clean



Adjustable angle



Timer



Quiet



For various tubes

Turnable plate capacity with tube holders:

8 × 50ml tubes, 16 × 10/15ml tubes or 32 × 1.5/2.0ml tubes

Product parameters

Model	TM-80	Voltage	AC 100 ~ 230V, 50/60Hz
Speed	10rpm ~ 80rpm	Power	30W
Tilt Angle Range	0° ~ 90°	Dimensions(W×D×H)	250 x320 x300 (mm)
Timer	0 ~ 99h59m	Net.weight	4.5kg

Mini-7KS Combination Rotor Centrifuge

Centrifuges

Introduction

Product Mini-7KS is designed with a "three in one" combination rotor, which suitable for centrifuge tubes 6x1.5/2.0ml or 6x0.5ml or 16x0.2ml and 8 x 2 x0.2ml PCR tube strips. It can centrifuge a variety of centrifuge tubes without replacement of rotor, which is convenient for users and saves time.



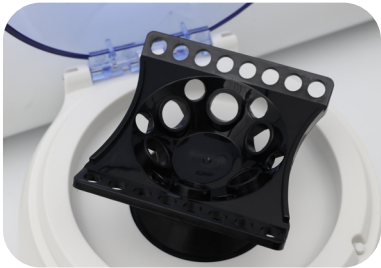
Three choices of speed, with timer function



Combination Rotor

Features

- Micro DC motors and carbon fiber rotors
- Ultra -low noise runs, almost silent
- High strength housing for fall and impact resistance
- Clamshell switch and stop automatically when opening
- Three choices of speed (4000rpm,6000rpm,7000rpm) and timer functions meet different experimental requirements



Combination rotor

Product parameters

Model	Mini-7KS	Timer	1s-99m59s
Speed	4000rpm,6000rpm&7000rpm adjustable	Noise Level	≤ 45 dB
Max.RCF	960xg(4000rpm)/2000xg(6000rpm)/2900xg(7000rpm)	Dimensions (W×D×H)	160x176x135 (mm)
Voltage	220V/110V 50~60HZ	Weight	≤ 1.6kg
Capacity	centrifuge tube: 6x1.5ml/2.0ml,6x0.5ml,16x0.2ml PCR tube strips: 2x8x0.2ml		

Mini Centrifuge

Centrifuges

Introduction

The mini centrifuge is novel in appearance and versatile. It is equipped with two centrifugal rotors and multiple test tube sleeves for 2.0ml/1.5ml/ 0.5ml/0.2ml centrifuge tubes and 8 × 2 × 0.2ml PCR tube strips. Fully transparent round top cover with multi rotor equipped, and an open cover pause function and electronic timing fully embodied the design concept of humanization.



Features

- Large radius with 8-hole rotor design, 1.5-fold stronger centrifugal force
- Top cover opens automatically for easy one-handed operation
- Snap-on design for easy rotor replacement and removal
- Noise reduction function, near silent operation
- The maintenance-free motor is durable, safe and reliable
- Exquisite appearance and compact size



Unique Snap-on design



Easy operation



Stronger centrifuge force



Clamshell switch

Applications

- Serum extracted from whole blood
- Separation of blood cells
- Rapid sedimentation of samples
- Supernatant extraction of various samples
- Microbial sample processing
- Partition centrifugation for PCR experiments

Product parameters

Model	Mini-4K	Mini-6K	Mini-7K	Mini-10K	Mini-10K+
Speed	4000rpm	6000rpm	7000rpm	10000rpm	3000-10000rpm
Max.RCF	860xg	2000xg	2600xg	5400xg	500-5400xg
Capacity	Centrifuge Tube : 8×2.0ml/1.5ml/0.5ml/0.2ml PCR tube strips : 8×2×0.2ml				
Timer	1~99m59s				
Noise Level	≤ 45dB		≤ 55dB		
Dimensions (W×D×H)	160 x 176 x 124 (mm)				
Weight	≤ 1.5kg				
Voltage	220V/110V 50-60Hz				

Equipped accessories



Strip rotor

For 0.2ml × 16 tubes



8-position rotor

For 1.5/2.0ml × 8 tubes



Tube adaptors

For 0.5ml tubes

Mini Centrifuge

///Centrifuges

///Introduction

The mini centrifuge is novel in appearance and versatile. It is equipped with two centrifugal rotors and multiple test tube sleeves for 2.0ml/1.5ml/0.5ml/0.2ml centrifuge tubes and 8× 2× 0.2ml PCR tube strip. Fully transparent round top cover with multi rotor equipped, and an open lid pause function and electronic timing fully embodied the design concept of humanization.



///Features

- Exquisite appearance and compact size
- Large radius with 8-hole rotor design, 1.5-fold stronger centrifugal force
- Top cover opens automatically for easy one-handed operation
- Snap-on design for easy rotor replacement and removal
- Noise reduction function, near silent operation



Unique Snap-on design



Easy operation



Stronger centrifuge force



Clamshell switch

///Product parameters

Model	Mini-4KA	Mini-6KA	Mini-8KA	Mini-10KA	Model	Mini-4KA	Mini-6KA	Mini-8KA	Mini-10KA
Speed	4000rpm	6000rpm	8000rpm	10000rpm	Noise Level	≤ 45dB			
Max.RCF	860xg	2000xg	3500xg	5400xg	Dimensions (W×D×H)	160 x 176 x 121 (mm)			
Timer	---				Weight	≤ 1.5kg			
Voltage	220V/110V 50-60HZ								
Capacity	Centrifuge Tube : 8×2.0ml/1.5ml/0.5ml/0.2ml PCR tube strips : 8×2×0.2ml								

Applications

- Serum extracted from whole blood
- Separation of blood cells
- Rapid sedimentation of samples
- Supernatant extraction of various samples
- Microbial sample processing
- Partition centrifugation for PCR experiments

Equipped accessories



///Strip rotor

For 0.2ml × 16 tubes



///8-position rotor

For 1.5/2.0ml × 8 tubes



///Tube adaptors

For 0.5ml tubes

CF-1542 High Speed Centrifuge



Centrifuges

Features

- TFT LCD touch screen, easy and friendly operation
- Impact design, Reliable and Safe
- Extremely quiet, lower than 62dB
- Soft brake function to protect sensitive samples
- Maintenance-free brushless motor
- Adsorption locking design help user to close lid by one hand
- Bio-safety rotor with triple protection



TFT touch screen



Soft brake protects sensitive samples



Maintenance-free brushless motor



Extremely quiet

Product parameters

Model	CF-1524	Acceleration/Deceleration	I (≤ 20s) ; II (≤ 40s) ; III (≤ 60s)
Speed	500~15000rpm (Increasement100rpm)	Max. Power	500W
Timer	1s~99m59s (short spin available)	Net. Weight	12kg
Max.Density of Sample	1.2m/ml	Dimension(W×D×H)	250×360×210(mm)

Optional rotors

Capacity	24×1.5ml/2.0ml tubes	18×5ml	4×PCR strips
Rotor Max.Radius	85mm		68mm
RCF	0-21400xg		17100xg

CF-1524R Refrigerated Centrifuge



///Centrifuges

///Features

- TFT LCD touch screen, easy and friendly operation
- Impact design, Reliable and Safe
- Extremely quiet, lower than 58dB
- Soft brake function to protect sensitive samples
- Maintenance-free brushless motor
- Adsorption locking design help user to close lid by one hand
- Bio-safety rotor with triple protection
- QTemp. function for quick pre-cooling of centrifuge



TFT touch screen



Soft brake protects sensitive samples



Maintenance-free brushless motor



Extremely quiet

///Product parameters

Model	CF-1524R	Max.Density of Sample	1.2/ml	Cooling Rate (to 4°C)	≤ 20min
Voltage	AC100~120V/AC200~240V 50~60Hz	Acceleration/Deceleration	20s	Temperature Range	-20°C ~ +40°C (under room temperature 25°C)
Timer	1s~99m59s (short spin available)	Cooling function	Motor not working: cool down to -20°C Motor working: cool down to 4°C	Power	500W
Speed	500~15000rpm (Increasement100rpm)	Temperature Accuracy (at 4°C)	±2°C	Noise	58dB
RCF	100-21400xg	Dimension (W×D×H)	300x500x320 (mm)	Weight	30kg

///Optional rotors

Capacity	24×1.5ml/2.0ml tubes	4× 8x0.2ml strips	18×5ml (For round bottom)
Rotor Max.Radius	85mm	68mm	85mm
RCF	100-21400xg	100-17100xg	100-21400xg

MC-15K Micro High Speed Centrifuge

///Centrifuges

///Introduction

The product MC-15K is a miniaturized high-speed centrifuge with small footprint and safe operation that for biological laboratories. It accelerates/ decelerates quickly with soft brake function, effectively preventing sample resuspension and protecting sensitive samples.



///Rotor lid



///Tube adaptors



///Features

- Noise reduction and near silent runs
- Pressing the “Quick” key alone for transient centrifugation
- High strength aluminum alloy rotor is sterilizable
- Unique air duct for minimum sample temperature rise
- Stronger Al-alloy autoclavable rotor
- Safe and reliable electronic lock protection
- Equipped with an automatic imbalanced detection system



Unique air duct



BLDC motor Long life maintenance free



Soft brake function



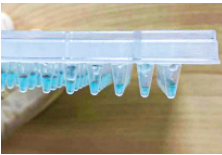
Automatic imbalance detection

///Product parameters

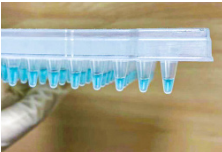
Model	MC-15K	Max.Rotor Radius	60mm	Acceleration/Deceleration Rate (Slow)	60±5s
Voltage	DC24V 5A	Capacity	12×1.5/2.0ml	Max.Sample Density	1.2g/ml
Timer	1s~99m59s	Liquid temperature rise	≤ 10°C	Power	100W
Speed	500~15000rpm (100rpm increments)	Noise Level	≤ 60dB	Dimension (W×D×H)	230×270×155 (mm)
Max.RCF	100~15000xg (100xg increments)	Acceleration/Deceleration Rate (Fast)	≤ 25s		

MP-2500 Microplate Centrifuge

///Centrifuges



///Before



///After



///Equipped with tube adaptors



///Introduction

MP-2500 microplate centrifuge is an instantaneous centrifuge specially designed for microplate. It is suitable for: 0.2ml PCR tube strip、8×0.2ml PCR tube strips、96-well or 384-well PCR plates、Various standard PCR microplates (including skirted)

///Features

- Applies to kinds of PCR plates with/without skirt
- Two operating modes: inching and timing
- Instantaneous acceleration to 2800 rpm and stop in 6 s with electronic brake
- Wall droplets rapidly cleared
- Efficiently improves PCR experiment result
- Top cover opening 95° for easy operation



BLDC motor Long life maintenance free



Stop in 6s



Inching and timing mode



Easy to operate

///Product parameters

Model	MP-2500	Max.RCF	600xg	Deceleration Time	6s
Voltage	DC 24V, 2A	Max.Rotor Radius	63mm	Acceleration Time	≤ 15s
Timer	1s~99s (Short Spin)	Noise Level	≤ 55dB	Power	48W
Max.Speed	2800rpm	Capacity	8×0.2ml PCR tube strips/0.2ml PCR tubes / 2×96-well PCR plate	Dimensions (W×D×H)	220x245x200 (mm)

DC150-1/-2 Sample Concentrator

/// Sample Concentrators



/// DC150-1



/// DC150-2

/// Introduction

Fast efficient sample concentration suitable for a variety of tube controlled by PID with high precise temperature. The gas delivery needles are independent, which could control gas separately to ensure sample concentration a good uniformity. The height of the sample concentrators gas reservoir is located on an adjustable stand for accurate height control. This flexible combination of blocks makes the instrument compatible with most sample vessels.

/// Features

- Independent needles avoid cross contamination
- Every gas volume adjustable
- Needles can work combined or alone
- Convenient to adjust gas for samples
- Accurate temperature, large temperature range, easy to calibrate
- Safe to use due to the height adjustable stand
- Stand rod with scale for accurate height control



Independent needles



Rod with scale



Display



Timer

/// Product parameters

Model	DC150-1	DC150-2	Model	DC150-1	DC150-2	Model	DC150-1	DC150-2
Temperature Control Range	RT +5°C ~150°C		Temperature Stability @120°C	±1°C		Dimension (W×D×H)	220 x290 x540 (mm)	
Heating Up Rate	≤ 30min (20°C to 150°C)		Timer	0~99h59min		Block quantity	1	2
Temperature Stability @40°C	±0.3°C		Nitrogen Flow	0~12L/min		Power	200W	400W
Temperature Stability @100°C	±0.5°C		Pressure	≤ 0.2MPa		Weight	3.9kg	5kg



D1A



D2A



D3A



D4A



D5A



D6



D7



D8



D9



D10



D11



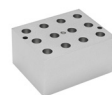
D12



D13A



D14A



D15A



D16A



Gas flow controller for option

Optional Blocks

Type	Tube diameter	Capacity	Size mm	Type	Tube diameter	Capacity	Size mm
D1A	6 mm	12	96.5X76.5X50	D9	20 mm	12	96.5X76.5X50
D2A	7 mm	12	96.5X76.5X50	D10	26 mm	8	96.5X76.5X50
D3A	10 mm	12	96.5X76.5X50	D11	28 mm	6	96.5X76.5X50
D4A	12 mm	12	96.5X76.5X50	D12	38mm	3	96.5X76.5X50
D5A	13 mm	12	96.5X76.5X50	D13A	0.2ml centrifuge tube	12	96.5X76.5X50
D6	15 mm	12	96.5X76.5X50	D14A	0.5ml centrifuge tube	12	96.5X76.5X50
D7	16 mm	12	96.5X76.5X50	D15A	1.5ml centrifuge tube	12	96.5X76.5X50
D8	19 mm	12	96.5X76.5X50	D16A	2ml centrifuge tube	12	96.5X76.5X50

DC150-1A Sample Concentrator

Sample Concentrators

Introduction

Designed for Microplate with unique heating aluminum block which can transmit heat to sample quickly. Fast efficient sample concentration controlled by PID with high precise temperature, with display, Timer, beep alarm functions.



Features

- Independent needles avoid cross contamination
- Convenient to adjust gas for samples
- Accurate temperature up to 150°C
- Safe to use due to the height adjustable stand
- Stand rod with scale for accurate height control



Rod with scale



Display



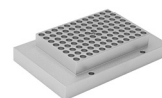
Gas chamber Good sealing

Product parameters

Model	DC150-1A	Temperature stability @100°C	≤ ±0.5°C	Nitrogen Flow	0~12L/min
Temperature control range	RT+5°C~150°C	Temperature stability @120°C	≤ ±1°C	Pressure	≤ 0.2MPa
Heating Up Rate	≤ 30min (20°C to 150°C)	Block quantity	1	Power	400W
Temperature stability @40°C	≤ ±0.3°C	Timer	0~99h59m	Dimension (W×D×H)	220x290x540 (mm)

Optional Blocks

Type	Tube diameter	Size (W×D×H)
D17	96×0.2ml PCR plate, 8×0.2ml strip	153×96.5×33.5 (mm)
D18	Elisa plate, deep well plate, cell culture plate	153×96.5×22.5 (mm)



D17



D18



Gas flow controller for option

DC150-1B Visible Sample Concentrator

Sample Concentrators

Introduction

Fast efficient sample concentration controlled by PID with high precise temperature, with display, timer, beep alarm functions. The heating aluminum block which can transmit heat to sample quickly, make the device an ideal replacement of the traditional water bath concentrator. This sample concentrator widely used in fields of drug testing, hormone analysis, liquid phase and spectrometry and etc.



Features

- Large temperature range, high efficient
- Unique designed block with slots for sample observation
- Independent needles avoid cross contamination
- Device can be used in fume hood to handle poison gas
- Built-in over heat system
- LED display, easy to operate



Block with slots for observation



Rod with scale



Display



Independent needles

Product parameters

Model	DC150-1B	Temperature Stability @120°C	≤ ±1°C	Gas Chamber adjustable distance	280mm
Temperature Control Range	RT +5°C ~150°C	Block quantity	1	Pressure	≤ 0.2MPa
Heating Up Rate	≤ 30min (20°C to 150°C)	Timer	0 ~99h59m	Power	400W
Temperature Stability @40°C	≤ ±0.3°C	Nitrogen Flow	0~12L/min	Dimension (W×D×H)	220x290x540 (mm)
Temperature Stability @100°C	≤ ±0.5°C	Needles Length	150mm		

Optional Blocks

Type	Capacity	Block hole diameter	Size (mm)
K1	∅10 mmx 12	10.5 mm	153 x 96.5 x 50
K2	∅12 mmx 12	12.5 mm	153 x 96.5 x 50
K3	∅13 mmx 12	13.5 mm	153 x 96.5 x 50
K4	∅15 mmx 12	15.5 mm	153 x 96.5 x 50
K5	∅16 mmx 12	16.5 mm	153 x 96.5 x 50
K6	∅19 mmx 12	19.5 mm	153 x 96.5 x 50
K7	∅20 mmx 12	20.5 mm	153 x 96.5 x 50



K1



K2



K3



K4



K5



K6



K7

NS-9 Incubator Shaker



///Shakers



///Introduction

This incubator can offer oscillation and incubation(heating) for samples in beakers or flasks and other vessels due to a variety of optional platforms. It is an ideal equipment for cell/tissue culture, fermentation, hybridization and biochemical reaction in medical, biology, pharmacy, food safety and environmental experiments.

///Features

- 4.3 inch colorful TFT screen, easy to use
- Impact structure, reasonable size for most labs
- Good temperature uniformity, low noise benefit from MCU controller and advance software
- Unique balance system ensuring stable high speed running
- Over-temperature protect, as well as safe guard upon lid open
- Maintenance free brushless motor and high precise bearing



TFT display, easy set up parameters



Maintenance free Brushless motor

///Product parameters

Mode	NS-9	Temperature Uniformity	$\leq \pm 0.5^{\circ}\text{C}$ (@37°C)	Max.Height of vessel	305mm	Max.Power	650w
Temperature Control Range	RT +5°C ~ 60°C	Amplitude	20mm	Max.Load	5kg	Dimension (W×D×H)	400 x 630x 490 (mm)
Temperature Precision	$\leq \pm 0.3^{\circ}\text{C}$ (@37°C)	Speed range	50 ~ 300rpm	Timer	1min ~ 99hour	Weight	37kg
Temperature Display	0.1°C	Platform dimension	310 x 310mm	Voltage	AC110/220V, 50/60Hz		

///Max. capacity of NP4

Flask type	Capacity
50ml	25
100ml	16
250ml	9
500ml	5
1L	4
2L	2

///Optional accessories

Type	Platform	Size
NP1	Flat type	315X315
NP2	Universal with springs	310X310X45
NP3	Platform with clamps	315X315
NP4	Platform with adhesive mats	315X315 (with 4 pcs adhesive mate)

NS-16 Incubator Shaker



///Shakers

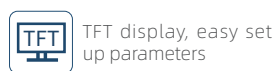
///Introduction

This incubator can offer oscillation and incubation(heating) for samples in beakers or flasks and other vessels due to a variety of optional platforms. It is an ideal equipment for cell/tissue culture, fermentation, hybridization and biochemical reaction in medical, biology, pharmacy, food safety and environmental experiments.



///Features

- 4.3 inch colorful TFT screen, easy to use
- Impact structure, reasonable size for most labs
- Good temperature uniformity, low noise benefit from MCU controller and advance software
- Unique balance system ensuring stable high speed running
- Over-temperature protect, as well as safe guard upon lid open
- Maintenance free brushless motor and high precise bearing



///Product parameters

Model	NS-16	Temperature Uniformity	≤ ±0.5°C (@37°C)	Max.Height of vessel	365mm	Max.Power	650w
Temperature Control Range	RT +5°C ~ 60°C	Amplitude	20mm	Max.Load	10kg	Dimension (W×D×H)	525 x 770 x 535 (mm)
Temperature Precision	≤ ±0.3°C (@37°C)	Speed range	50 ~ 300rpm	Timer	1min ~ 99hour	Weight	45kg
Temperature Display Accuracy	0.1°C	Platform dimension	420 x420mm	Voltage	AC110/220V, 50/60Hz		

///Max. capacity of NP8

Flask type	Capacity	Flask type	Capacity
50ml	64	1L	9
100ml	36	2L	4
250ml	16	3L	4
500ml	9		

///Optional accessories

Type	Platform	Size
NP5	Flat type	420X420
NP6	Universal with springs	410X410X80
NP7	Platform with clamps	420X420
NP8	Platform with adhesive mats	420X420 (with 9 pcs adhesive mate)

WS-100 Water Bath Shaker

///Shakers

///Introduction

This equipment offers water bath incubation and mild oscillation, which is economical, safe and quiet. It is widely used in fields of biology, microbiology, medical analyzer and etc.



TFT color display



Maintenance free motor



Lid open to 95°



Suitable for various vessels

///Features

- TFT color display, easy operation to set up programs
- Maintenance free brushless motor
- PID controlled, stable temperature
- Built-in liquid level sensor with beep alarm, safe and reliable
- Hinge lid can open to 95 degree, convenient for user to handle samples

///Capacity

Tubes	Flasks
45*10ml	6*100ml
45*15ml	3*250ml
20*50ml	2*500ml
---	1*1000ml

///Product parameters

Model	WS-100	Speed Range	30-200 rpm	Tank Dimension	240x300x150
Tank Volume	10L	Temperature Accuracy	±0.3°C	Voltage	AC100~120V/AC200~240V 50~60Hz
Temperature Control Range	RT+5~100°C	Uniformity	±0.3°C	Power	1100W
Timer	1m~99h59m	Vibration Mode	Circle	Dimension (W×D×H)	340x470x355 (mm)

CS-200E Orbital Shaker



///Shakers

///Introduction

CS-200E is an economical shaker which is affordable for most labs, offering gentle and stable vibration for a variety of sample mixture in fields biology, micro biology and medical analysis. Platforms are applied to kinds of vessels like, cultures, flasks, tubes and etc.



///Features

- Simple design makes operation easy
- Brushless motor is maintenance free and reliable, quiet
- Speed can be adjustable with stable vibration
- Durable rubber mat is leakproof and anti-corrosive
- Various platforms for option

///Product parameters

Model	CS-200E	Speed	0-250rpm	Dimension (W×D×H)	345X308X93 (mm)
Shaking Mode	Circle	Operation Mode	Continuous	Voltage	AC100-240V
Orbital Diameter	20mm	Max.Load (with clamps)	3.5kg	Shell guard level	IP21

///Optional Trays

Type	Platform	Dimension (mm)
CP1	Single platform	380x260 (mm)
CP2	Double platform	380x260x120 (mm)
P3	Aluminum alloy tray with 6x250ml flask clamps	270x220x5 (mm)
P4	Aluminum alloy tray with 12x100ml flask clamps	270x220x5 (mm)
P5	Stainless steel tray with adjustable flask holder	270x220x40 (mm)
P6	Universal tray	301x235x50 (mm)



CP1



CP2



P3



P4



P5



P6

CS-100/200 Orbital Shaker

Shakers

Introduction

CS-100/200 series orbital shaker offers gentle oscillation suitable for various mixing in different fields due to DC brushless motor and microcomputer control technology. It is easy to change different trays, it can mix and cultivate common flasks, petri dishes, and beakers. Widely used in fields of biology, microbio logy and medical analysis.



Features

- Maintenance free DC brushless motor
- Can be used in freezer room due to a variety of modes for mixing in different fields
- LCD displays instant speed, running time and working status
- Timer function with automatic alarm function
- Replaceable trays for different vessels



Maintenance free motor



Timer/pulse/short mixing



LCD display



Six specifications of pallets

Product parameters

Model	CS-100	CS-200	Model	CS-100	CS-200
Speed	50-300rpm	50-250rpm	Working Temperature	4-45°C	
Orbit Diameter	10mm	20mm	Dimension (W×D×H)	284×264×90 (mm)	
Timer	1min-99h59m		Voltage	AC100-230V	
Load	3kg	2.5kg			

Optional Trays

Type	Platform	Dimension (mm)
CP1	Single platform	380x260 (mm)
CP2	Double platform	380x260x120 (mm)
P3	Aluminum alloy tray with 6x250ml flask clamps	270x220x5 (mm)
P4	Aluminum alloy tray with 12x100ml flask clamps	270x220x5 (mm)
P5	Stainless steel tray with adjustable flask holder	270x220x40 (mm)
P6	Universal tray	301x235x50 (mm)



CP1



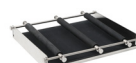
CP2



P3



P4



P5



P6

RS-100E Rocker Shaker



///Shakers

///Introduction

This rocker shaker is designed with simple conception, widely used for dyeing and decoloring. It's a ideal device for cell culture, antibody and vaccine production fields as well as hybridization, WB and samples washing procedures and etc.



///Features

- Simple design makes operation easy
- Brushless motor is maintenance free and reliable, quiet
- Speed can be adjustable with stable vibration
- Durable rubber mat is leakproof and anti-corrosive
- Various platforms for option

///Product parameters

Model	RS-100E	Speed	10-70rpm	Dimension (W×D×H)	345X308X108 (mm)
Shaking Mode	Rock shaking	Operation Mode	Continuous	Voltage	AC100-230V
Orbital Diameter	10°	Max. Load (with clamps)	3kg	Shell guard level	IP21

///Optional Trays

Type	Platform	Dimension (mm)
CP1	Single platform	380x260 (mm)
CP2	Double platform	380x260x120 (mm)



CP1



CP2

RS-100 Rocker Shaker

///Shakers

///Introduction

RS-100 provides a gentle oscillation to various laboratory vessels, such as petri dishes, triangular flasks and culture flasks; which could be used in cold room. It's ideal device for bio molecular hybridization on strips and for staining/ destaining procedures in electrophoresis and homogenization.



BLDC motor



Timing/Pulse/Touch



LCD display

///Features

- Offering gentle oscillation when acceleration and deceleration
- Compliance to various vessels, like culture dishes, flasks
- Stainless platforms with wear-resistant mat, easy to clean, anti-corrosive, anti-deformable
- Optional platforms for choices to users' needs
- User-friendly LCD display is easy to operate
- Ball bearing makes joints more reliable
- Maintenance free DC brushless motor

///Product parameters

Model	RS-100	Voltage	AC100 ~ 230V,50/60HZ
Speed	10 ~ 100 rpm	Power	45W
Timer	1min ~ 99h59m	Tray Size(W×D)	300×240 mm
Amplitude	(up and down) 25mm(10')	Dimension (W×D×H)	284×264×134 (mm)
Max.Capacity	5.0kg	Net.Weight	5.6kg

///Optional Trays

Type	Platform	Dimension (mm)
CP1	Single platform	380x260 (mm)
CP2	Double platform	380x260x120 (mm)



CP1



CP2

HS-350C Hotplate Magnetic Stirrer

///Magnetic Stirrers

///Introduction

HS-350C magnetic hotplate is characterized safe, user-friendly. The hotplate is made of stainless steel coated with nano ceramic, which can heat up to 340°C .



Over-heat protection



anti-corrosive



Strong magnetic Anti-bounce



///Features

- Tempered glass surface with big size screen, easy to use and set parameters
- Stainless steel coated ceramic, anti-corrosive, beating high temperature
- Adjustable speed is suitable for different experiments
- Safety Temp. displays on screen, automatically turned off once temperature exceeding 50°C to the setting temperature
- Instant temperature displayed after shut-off, prevent users get burnt by accident

///Product parameters

Model	HS-350C	Speed Range	100~1500rpm	Max.Stirring Bar Length	80mm
Heating plate Material	Stainless steel coated ceramic	Stirring Position	1	Display	LCD
Temperature Range	R.T. +5°C ~340°C	Voltage	AC100-120V/AC200-240V 50-60Hz	Dimension (W×D×H)	160x270x75 (mm)
External temperature sensor	PT1000	Heating Plate Dimension	φ137mm	Power	500W
Safety Temp.	390°C	Max.Sample Volume (H ₂ O)	20L	Weight	2.5kg

HS-350 Hotplate Magnetic Stirrer

///Magnetic Stirrers

///Introduction

This stirrer with magnetic hotplate is made of stainless steel coated ceramic, the heating plate can heat up to 340 °C , which is anti-corrosive, bearing heat shock. Stirring with magnetic stir bar, it is used in a variety of labs.

///Features

- TFT screen, easy to use and set parameters
- Maintenance brushless motor, safe and durable
- Stainless steel coated ceramic, anti-corrosive, bearing high temperature
- Adjustable speed
- Countdown timer with alarm
- Over-heat protect with temperature displayed



///Product parameters

Model	HS-350	Heating Plate Temperature	RT+5°C -340°C	Min.Adjustable Safe Temperature	50°C
Voltage	AC100-120V/AC200-240V 50-60HZ	Temperature Accuracy	±3°C	Max.Adjustable Safe Temperature	390°C
Heating Plate Dimesion	Ø 135	Temperature Sensor	PT1000	Dimension (W×D×H)	170x275x76 (mm)
Timer	1m-99h59m	Speed Range	100~1500rpm	Power	550W
Stirring Position	1	Max.Sample Volume (H ₂ O)	20L	Weight	2.2kg
Heating Plate Material	Stainless steel coated ceramic	Max.Stirring Bar Length	80mm		

HS-8 Hotplate Magnetic Stirrer

///Magnetic Stirrers

///Introduction

HS-8 is a hotplate stirrer designed for high-efficiency experiments. The maintenance free brushless DC motor working with low noise. Working surface adopts stainless steel coated silicone film which is non-slip and corrosion resistant



///Features

- LCD display
- Stable temperature
- Max. temperature 120°C
- Multi channel improves efficiency
- Stirrer bar running synchronously ensure samples uniformity
- Maintenance free brushless DC motor



Non-slip surface



Multi-channel

///Product parameters

Model	HS-8	Speed Range	200-1200 rpm
Voltage	AC100~120V/AC200~240V 50~60Hz	Power	400W
Stirring Position	8	Motor	Brushless DC motor
Max.Capacity	8x400ml	Working Surface	stainless steel coated silicone film
Max.Stirring Bar Length	46mm	Display	LCD
Temperature	RT +5~120°C	Dimension (W×D×H)	205x480x50 (mm)
Safe temperature	140°C		

S-8 Magnetic Stirrer

///Magnetic Stirrers

///Introduction

S-8 is a stirrer designed for high-efficiency experiments. The maintenance free brushless DC motor working with Low noise. Working surface adopts stainless steel coated silicone film which is non-slip and corrosion resistant.



///Features

- LCD display
- Maintenance free brushless DC motor
- Multi channel improves efficiency
- Stirrer bar running synchronously ensure samples uniformity



Multi-channel



Magnetic stirring bar

///Product parameters

Mode	S-8	Timer	1m~99h59m
Voltage	AC100~240V 50~60Hz	Stirring Bar Length	46mm
Position	8	Speed Range	200-1200 rpm
Max.Capacity	8x400ml	Motor	Brushless DC motor
Power	30W	Working Surface	stainless steel coated silicone film
Dimension (W×D×H)	205x480x50 (mm)	Display	LCD

OS-2200 (D) Overhead Stirrer

///Stirrers

///Introduction

OS-2200 (D) is a high-tech overhead stirrer with its compact design and ideal for mixing medium and high viscosity liquid or solid-liquid mixture applications in chemical synthesis, pharmaceutical, physical and chemical analysis, petrochemical, cosmetics, health products, food, biotechnology and other fields.



LCD display



Torque display



Automatic Display power



Optional stirrer



///Features

- Large screen, aluminum alloy head shell
- Speed and torque display, easy to operate
- Adjustable rotational speed with the sample consistency
- Near silence due to BLDC motor
- Safe and durable, overload protection and automatically shut down
- Clockwise or counterclockwise two operation modes

///Product parameters

Model	OS-2200	OS-2200D	Model	OS-2200	OS-2200D	Model	OS-2200	OS-2200D
Max.Capacity	20L	40L	Speed display Accuracy	±1rpm		Voltage	AC100 ~ 240V 50~60Hz	
Max.Viscosity	20000mpas	50000mpas	Rotation direction	clockwise/anti-clockwise		Power	100W	120W
Max.Torque	40Ncm	60Ncm	Clamping Diameter	0.5-10mm		Dimensions (W×D×H)	90 x 160 x 220 (mm)	
Speed	50~ 2200rpm		Timer	1-99h59m		Weight	3.3kg	3.5kg
Speed Accuracy	±3rpm		Screen	TFT 3.5 inch				

///Optional accessories

No.	Stirrers	Length	Max. diameter	Remark	No.	Stirrers	Length	Max. diameter	Remark
1	Propeller and Shaft	35cm	5cm	304 Stainless Steel	5	Propeller and Shaft	35cm	6.5cm	PTFE coated
2	Straight Blade and Shaft	35cm	6cm	304 Stainless Steel	6	Straight Blade and Shaft	35cm	7cm	PTFE coated
3	Pitched Blade and Shaft	35cm	6.8cm	304 Stainless Steel	7	Pitched Blade and Shaft	35cm	6.8cm	PTFE coated
4	Centrifugal head and Shaft	35cm	9cm	304 Stainless Steel	8	Centrifugal head and Shaft	35cm	8.5cm	PTFE coated

MJ-800(D) Bacti-cinerator Sterilizer

///Others

///Introduction

Bacti-cinerator sterilizer is used for incineration and disinfection of small tools and bottles such as inoculation rings, inoculation needles, lab tweezers and triangle and tube mouth. It is easy to operate and widely used in the environment of biological safety cabinets, purification worktables, suction fans and mobile vehicles, etc.



///Features

- Replace alcohol lamp, safe and convenient
- Center temperature up to 800°C ±50°C , rapid sterilization
- Small and light, easy to use
- Suitable for anaerobic chamber
- Ash organic material to prevent infectious splash and cross contamination
- Automatic shutdown after 3H, extending service life



Fixed Angle



Max. Temp ≥ 800°C ±50°C



Rapid sterilize



Automatic shutdown

///Product parameters

Model	MJ-800	MJ-800D	Model	MJ-800	MJ-800D
Central High Temperature	800°C ±50°C		Heater Head Length	150mm	100mm
Standby Temperature	400°C ±50°C		Power	200W	400W
Heater Head Angle	21°		Weight	1.3kg	1.4kg
Max.Sample Diameter	φ14mm	φ35mm	Dimension(W×D×H)	105x 152 x 200 (mm)	105x 140x 200 (mm)

GS-300(D) Glass Bead Sterilizer

///Others

///Introduction

GS-300(D) Glass Bead Sterilizer is a product for rapid sterilization of small experimental tools (such as surgical forceps, scissors, forceps, scalpels, needles, inoculation rings, inoculation needles, etc.) by high temperature glass beads. It can be used sterilize small solid metal and glass utensils within 10 seconds, and effectively eliminate bacteria, spores and other microorganisms. It is widely used in scientific research laboratories



///Features

- small size, easy operation and durable
- maximum temperature is 300°C
- high-performance heating elements, high-precision temperature controller with over temperature protection



LED Display



Corrosion Resistant



Max. Temp up to 300

///Product parameters

Model	GS-300	GS-300D	Model	GS-300	GS-300D
Voltage	AC100-120V/AC200-240V 50-60Hz		Tank Dimension	φ40mm×80mm	φ40mm×140mm
Temperature Range	100~300°C		Beads Capacity	150g	300g
Temperature Accuracy	≤ 5°C		Power	120W	250W
Heating Rate	≤ 25min (Room temperature to 300°)		Dimensions (W×D×H)	135 x 150 x 155 (mm)	135 x 150 x 205 (mm)

MiniH-100P Biological Indicator Incubator

///Others

///Introduction

MiniH-100P is special equipment for biological Indicators with small size and light weight. It is suitable for testing and cultivating the sterilization of various biological indicators for pressure steam sterilization and ethylene oxide sterilization, etc.



LCD display



Optional blocks



Overheat protection

///Feature

- LCD display
- Instant temperature and time countdown display
- Automatic fault detection with buzzer alarm
- Timer options by 0~99S, 0~99M, 0~99H
- Optional and customized blocks, easy to exchange
- Temperature calibration function
- Low power with 8W
- Multiple security protection

///Product parameters

Model	MiniH-100P	Temperature Stability@100°C	±0.3°C
Temperature Setting Range	RT +5°C ~80°C	Temp.Display Accuracy	0.1°C
Temperature Uniformity (below 56°C)	±0.3°C	Timer	0~99h, 0~99m, 0~99s
Temperature Stability@40°C	±0.3°C	Heating Up Rate	<6m (从 20°C to 56°C)

///Optional Blocks

Type	Capacity
E1	15 x φ10mm
E2	12 x φ12mm
E3	8 x φ15mm
E4	8 x φ16mm
E5	24 x φ9mm



•E1



•E2



•E3



•E4



•E5

VP-26D Vacuum Suction System

Others

Introduction

Our vacuum suction system is a benchtop, contamination free vacuum equipment, portable and easy to operate. This system combined by a vacuum pump and a collection bottle, which is widely used for sample aspiration/collection in biochemistry and medical engineering experiments like centrifugal liquid supernatant or sediment, Elisa plate washing and biochemical analyzer liquid.



Features

- Quiet, small size
- Low power driven by motor
- Oil-resistant pump membrane, can improve pump performance and Anti-vibration
- Adjustable pressure 0~0.09Mpa, air release valve



Negative Pressure
0~0.09Mpa



Optional 2
Drainage bottle

Product parameters

Mode	VP-26	VP-26D	Mode	VP-26	VP-26D
Voltage	AC100~120V/AC200~240V 50~60Hz		Pressure	0~0.09Mpa	
Gas Flow	26L/m		Filter Bottle	250ml	1000ml
Vacuum Degree	0.09Mpa		Usage Temperature	5°C ~30°C	
Dimension (W×D×H)	195x275x165 (mm)		Relative Humidity	≤ 70%	
Power	60W		Weight	4.5kg	

Remarks

- Please pay attention to the liquid volume in collection bottle, discharge when it reaches max. line to avoid suck-back.
- Don't keep it working over than 30min, turn off the equipment when it warms up. Restart when it cools down.
- After finishing experiment, vent residual gas from pump to extend equipment life. The trapped air in pump may damage pump.

BC-108 Blue Light Transilluminator

///Others

///Introduction

BC-108 works with LED Blue Light source, which can prevent the users' eyes, face, hands from UV rays hurt. It can replace traditional UV transilluminator to observe the nucleic acid and protein in the stained gel, cut the gel.



///Features

- Safe and reliable
- Small, ultra-thin and light
- User-friendly lid: easy to observe with amber transparent filter lid which is rotated or fixed angle as needed
- Durable: Maintenance free LED life longer than 60,000h
- Recommend to use nucleic acid stain agent which can be stimulated by 470nm wavelength light

///Product parameters

Model	BC-108	LED Radiation Mode	Double sides matrices
Voltage	DC24V	LED Life	60000h
Max.Gel Size	160x100 (mm)	Dimensions (WxDxH)	225x205x49 (mm)
Wavelength	470nm	Weight	1.3kg



HANGZHOU YOONING INSTRUMENT CO.,LTD.



2022

Customer Service: +86 571 88675528 Website: www.yooning.com

Email: info@yooning.com

Add: 4th Floor, #6 Building, No.4 Jiuqugang Road, Liangzhu Avenue,
Yuhang District, Hangzhou China
